

ROGERS ST

ROGERS ST

# 3.36 Acres Shaw, MS

## Hwy Frontage Lot

### \$26,000



 61

NHWY 61

 61

DORAN ST

DORAN ST



**SMALLTOWN**  
HUNTING PROPERTIES  
& REAL ESTATE<sup>SM</sup>

Office 662-846-1425

 61

# Property Profile

## Highway Frontage Lot

### Location:

- Shaw, MS
- Bolivar County
- Highway 61 Frontage
- ¼ mile north of Hwy 61 and 448 intersection

### Coordinates:

- 33.6039, -90.7663

### Property Information:

- 3.36± Surveyed Acres
- Commercial or residential upon city approval
- Located in a flood zone

### Property Use:

- Church
- Residential
- Commercial

### Tax Information:

- Parcel 30-01-900-00-02201-: \$472.77 for 2022



**SMALLTOWN**  
HUNTING PROPERTIES  
& REAL ESTATE<sup>SM</sup>

**HENRY MOSCO**

MANAGING BROKER

C: 662-719-7167

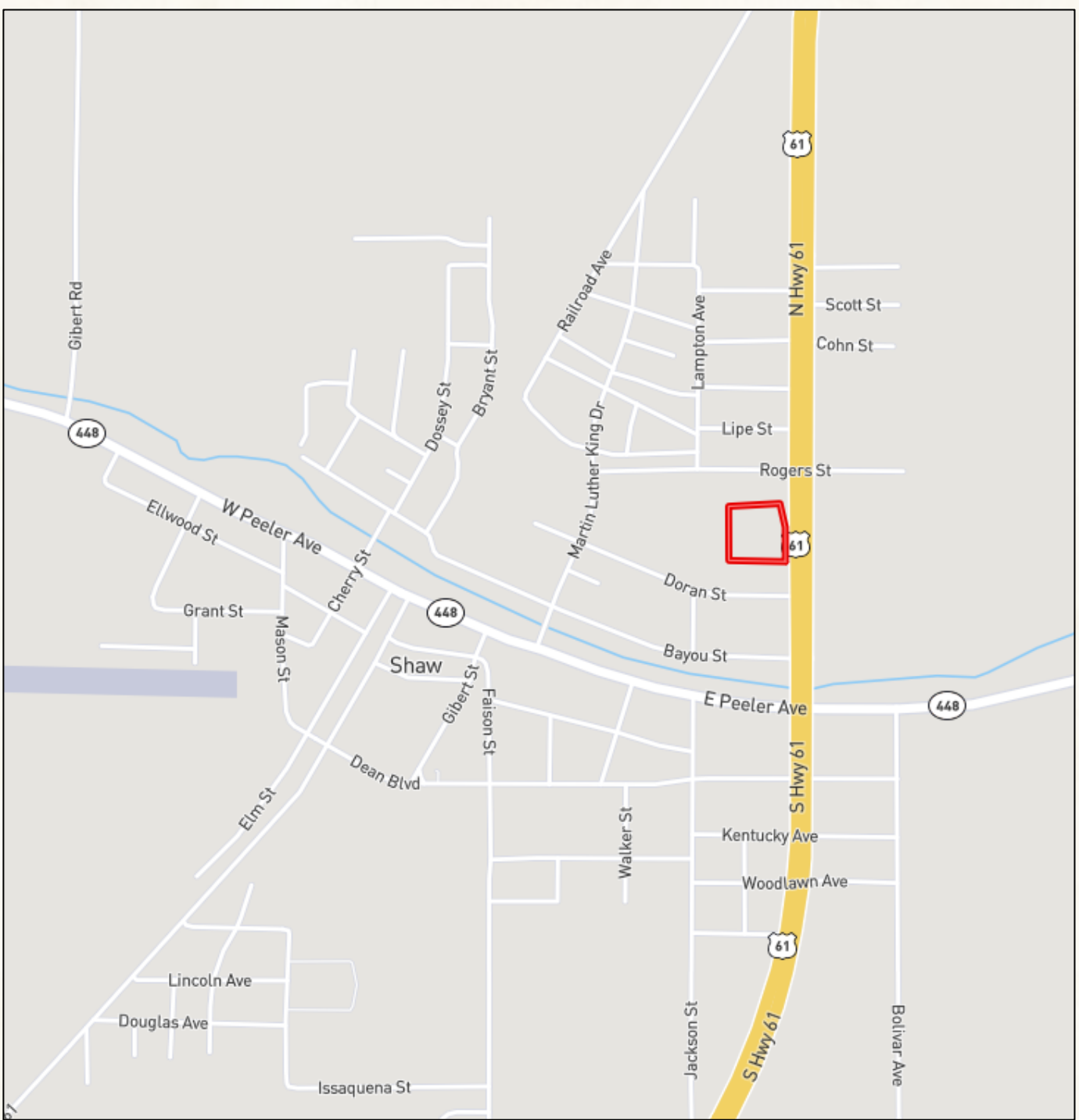
O: 662-846-1425

[henry@smalltownproperties.com](mailto:henry@smalltownproperties.com)

701 W. Sunflower Rd - Cleveland, MS 38732

[smalltownproperties.com](http://smalltownproperties.com)

Information is believed to be accurate but not guaranteed.



[MapRight Link](#)

[Google Map Link](#)



**SMALLTOWN**  
HUNTING PROPERTIES  
& REAL ESTATE<sup>SM</sup>

**HENRY MOSCO**

MANAGING BROKER

C: 662-719-7167

O: 662-846-1425

henry@smalltownproperties.com

701 W. Sunflower Rd - Cleveland, MS 38732

smalltownproperties.com

Information is believed to be accurate but not guaranteed.