

**42± ACRES IN HOLMES COUNTY, MS**

**\$69,300**



**SMALLTOWN**  
HUNTING PROPERTIES  
& REAL ESTATE

Office 769-888-2522

# Property Profile

## The Holmes 42

### Location:

- Holmes County, MS
- Located near Goodman
- Approximately 45 minutes north of Madison

### Coordinates:

- 34.7926, -89.2638

### Property Information:

- 42±/- Acres
- Heavily Timbered
- Abundant Wildlife (Deer, Turkey, and Small Game)
- Wildlife Plot in Place
- Great location

### Property Use:

- Investment
- Good Hunting
- Excellent Recreation

### Tax Information: 2021 - \$106

- Parcel #: 103502500003300



**MICHAEL OSWALT** | PRINCIPAL BROKER  
C: 662-719-3967 | michael@smalltownproperties.com

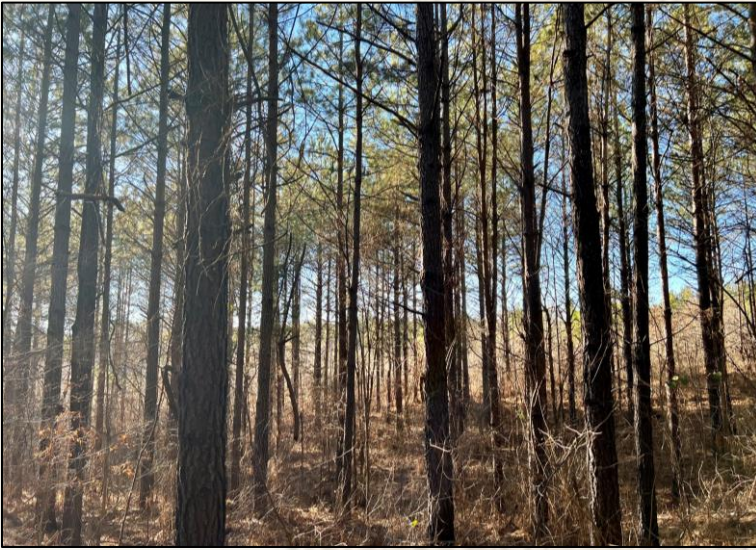


**SMALLTOWN**  
HUNTING PROPERTIES  
& REAL ESTATE<sup>SM</sup>



**BARRY HOLT** | LAND SPECIALIST  
C: 601-613-2288 | barry@smalltownproperties.com

If you are looking for an affordable recreational/hunting tract...this is the one for you. Conveniently located 5 minutes from I-55, 10 minutes from Holmes County State Park. The property offers utilities for that get away cabin site for you and your family's enjoyment. A large food plot and shooting house is already in place. Property consists of 20-year-old pines and mixed timber regrowth. This tract is situated 45 minutes from Madison making for a quick commute and you're in the hunting stand. Call Michael or Barry to schedule your private tour of the Holmes 42 today!



**MICHAEL OSWALT** | PRINCIPAL BROKER  
C: 662-719-3967 | michael@smalltownproperties.com

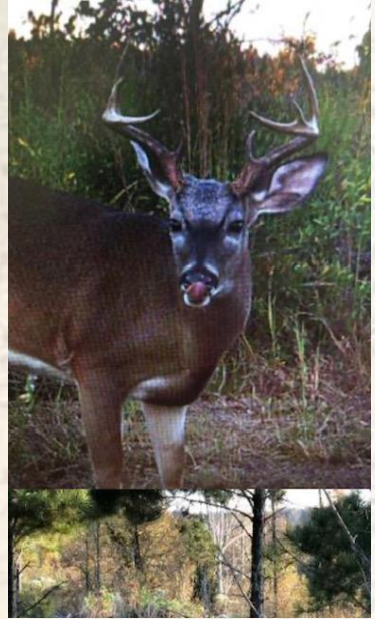
**BARRY HOLT** | LAND SPECIALIST  
C: 601-613-2288 | barry@smalltownproperties.com



**MICHAEL OSWALT** | PRINCIPAL BROKER  
C: 662-719-3967 | michael@smalltownproperties.com



**BARRY HOLT** | LAND SPECIALIST  
C: 601-613-2288 | barry@smalltownproperties.com



**MICHAEL OSWALT** | PRINCIPAL BROKER  
C: 662-719-3967 | michael@smalltownproperties.com

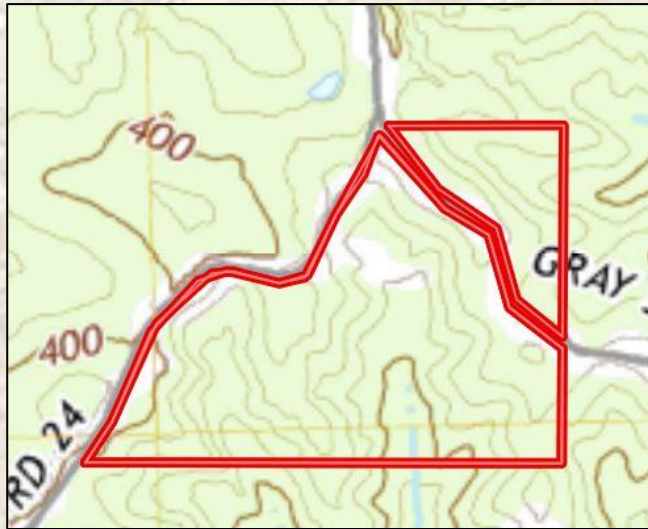


**BARRY HOLT** | LAND SPECIALIST  
C: 601-613-2288 | barry@smalltownproperties.com

[MapRight](#)  
[Link](#)



**Topo Map**



**MICHAEL OSWALT** | PRINCIPAL BROKER  
C: 662-719-3967 | michael@smalltownproperties.com

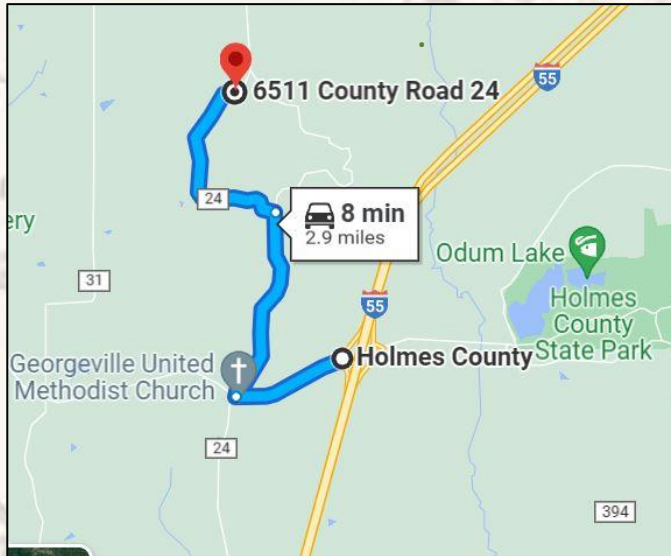


**SMALLTOWN**  
HUNTING PROPERTIES  
& REAL ESTATE™



**BARRY HOLT** | LAND SPECIALIST  
C: 601-613-2288 | barry@smalltownproperties.com

4848 Main St. - Flora, MS 39071 | O: 769-888-2522 | smalltownproperties.com



## Google Map Directions



If you have been searching for an affordable hunting tract to call your own call Michael or Barry for your private tour of The Holmes 42 today!

SOIL CODE	SOIL DESCRIPTION	ACRES	%	CPI	NCCPI	CAP
MeD3	Memphis silt loam, 8 to 12 percent slopes, severely eroded	19.77	50.76	0	75	6e
MeB2	Memphis silt loam, 2 to 5 percent slopes, eroded, south	9.69	24.88	0	83	2e
MeC2	Memphis silt loam, 5 to 8 percent slopes, eroded	6.46	16.59	0	82	3e
MeF2	Memphis silt loam, 12 to 40 percent slopes, eroded	3.02	7.75	0	19	7e
TOTALS		38.94(	100%	-	73.79	4.58



**MICHAEL OSWALT** | PRINCIPAL BROKER  
C: 662-719-3967 | michael@smalltownproperties.com



**SMALLTOWN**  
HUNTING PROPERTIES  
& REAL ESTATE™



**BARRY HOLT** | LAND SPECIALIST  
C: 601-613-2288 | barry@smalltownproperties.com