

44.6± Acres in Holmes County, MS

\$109,900



SMALLTOWN

**HUNTING PROPERTIES
& REAL ESTATESM**

Office 769-888-2522

Property Profile

Horseshoe Brake 44.6

Location:

- Mississippi Delta
- Holmes County
- 8± Miles Southwest of Tchula

Coordinates:

- 33.0998, -90.3226

Property Information:

- 44.6± Total Acres
- Cypress/Tupelo Gum Brake
- Mississippi Delta Duck Hunting
- Good Duck Habitat
- Proximity to Numerous Federal Waterfowl Refuges
- Frontage Along Quafaloma Road

Property Use:

- Hunting
- Recreational
- Investment

Tax Information: 2022 - \$229.00

- Parcel #: 005-32-00200



SMALLTOWN
HUNTING PROPERTIES
& REAL ESTATESM

CHRIS REED

LAND SPECIALIST

C: 601-906-0723

O: 769-888-2522

chris.reed@smalltownproperties.com


4848 Main St. - Flora, MS 39071

smalltownproperties.com

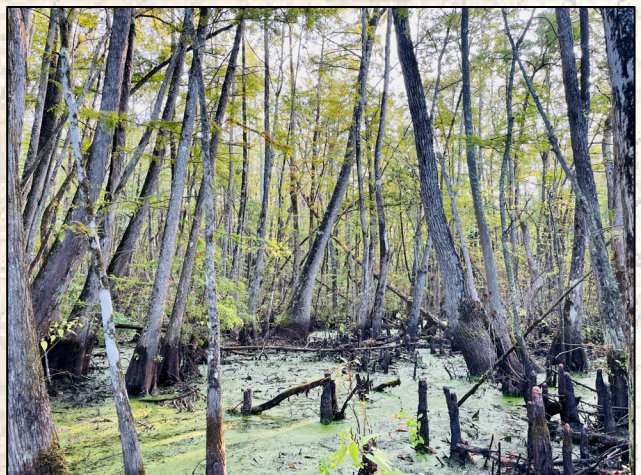
Information is believed to be accurate but not guaranteed.



MDULTRIE MOBILE Horseshoe

01/16/25 11:14 AM  55 °F

Welcome to Horseshoe Brake! Horseshoe Brake is an old cypress oxbow lake located in Holmes County, Mississippi, where the Mississippi Delta meets the Hills. This 44.6± acre tract is located on the west end of the Brake and waiting for new owners to add their stories to those already etched amongst the weathered cypress and tupelo gum covering Horseshoe. About 20± acres of mature cypress run thick through the middle of this tract. Open areas, scattered with cypress and tupelo gum, are located on the north and south sides of the property that provide options to hunt any wind.



SMALLTOWN
HUNTING PROPERTIES
& REAL ESTATESM

CHRIS REED
LAND SPECIALIST
C: 601-906-0723
O: 769-888-2522
chris.reed@smalltownproperties.com

4848 Main St. - Flora, MS 39071

smalltownproperties.com

Information is believed to be accurate but not guaranteed.



When the ducks arrive, they will have plenty to eat! This place is covered with green duckweed and aquatic plants, sure to attract mallards, gadwalls, and wood ducks during the winter months. When you find a spot that has abundant duck food, open areas of water for rest, located in a region with a rich history of duck hunting, you have all the elements you want for a successful duck hole.



SMALLTOWN
HUNTING PROPERTIES
& REAL ESTATESM

CHRIS REED

LAND SPECIALIST

C: 601-906-0723

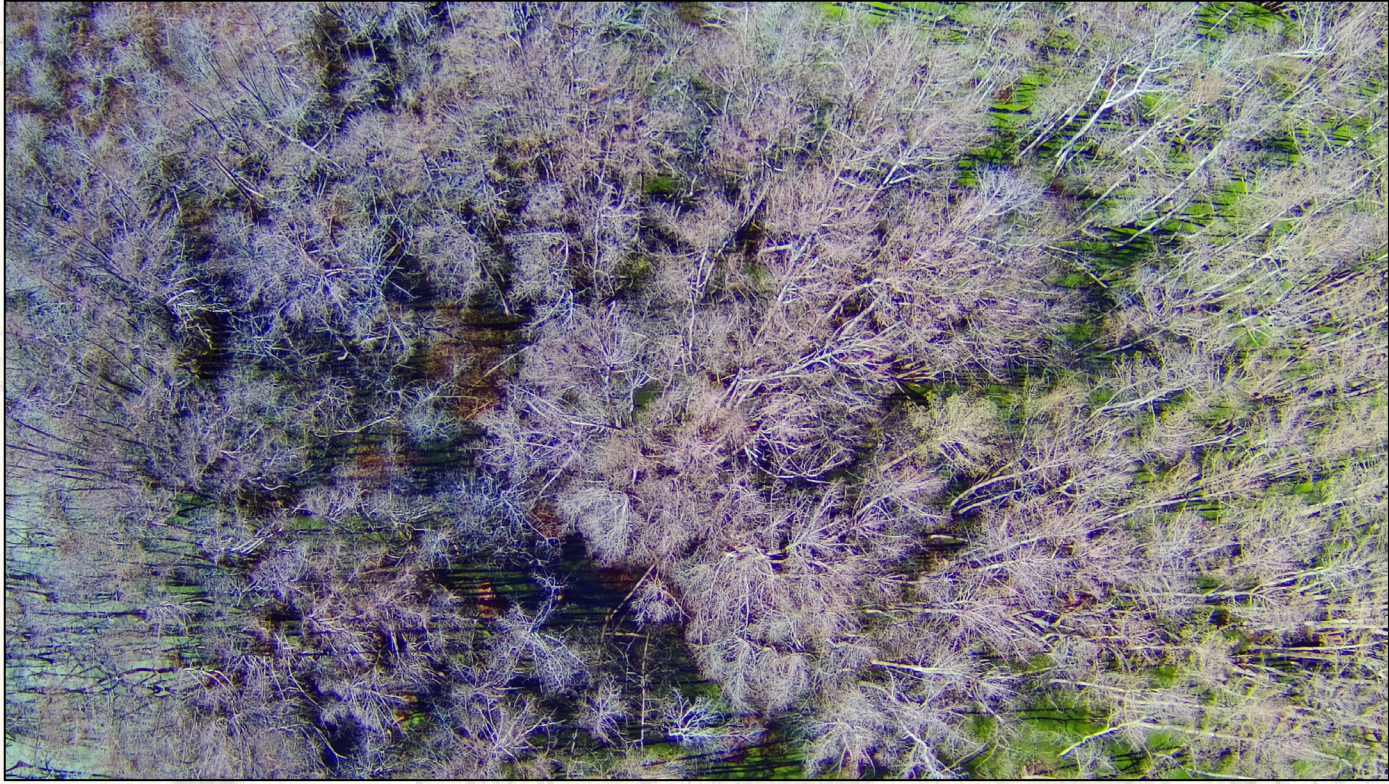
O: 769-888-2522

chris.reed@smalltownproperties.com

4848 Main St. - Flora, MS 39071

smalltownproperties.com

Information is believed to be accurate but not guaranteed.



The Horseshoe 44.6 is a blank canvas! Whether you prefer to hunt waterfowl by kayak or pirogue, like duck hunters of an era long ago, stand beside trees, or build the blind of your dreams, your options are numerous. The property boasts over 2,000± feet of frontage along Quafaloma road (gravel), allowing you to choose your preferred access point. With some work to create a few boat lanes and situated close to well-known waterfowl refuges, (Hillside 4.2 miles, Morgan Brake 10.9 miles, & Matthews Brake 18.4 miles), this tract is positioned perfectly to attract ducks and geese. Being around an hour from the Madison area, the Horseshoe 44.6 is close enough that when the ducks are thick, you could have a flash hunt before going into the office! If you are looking to add another duck hole to your existing footprint or simply a place to call your own, you need to take a look at this one!



SMALLTOWN
HUNTING PROPERTIES
& REAL ESTATESM

CHRIS REED

LAND SPECIALIST

C: 601-906-0723

O: 769-888-2522

chris.reed@smalltownproperties.com

4848 Main St. - Flora, MS 39071

smalltownproperties.com

Information is believed to be accurate but not guaranteed.





SMALLTOWN

HUNTING PROPERTIES
& REAL ESTATESM

CHRIS REED

LAND SPECIALIST

C: 601-906-0723

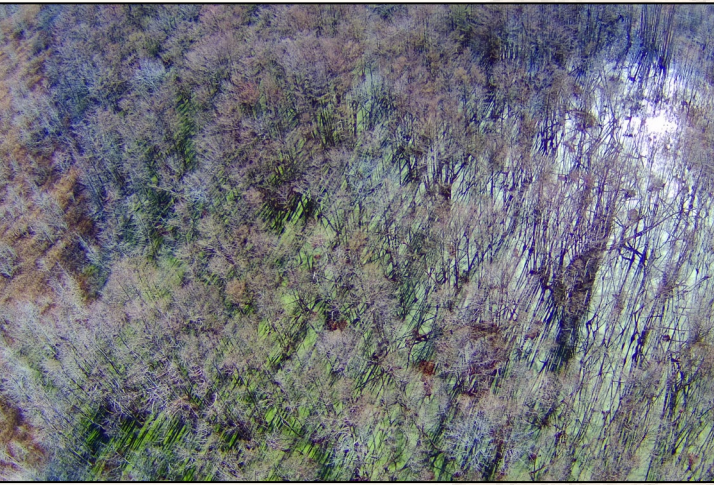
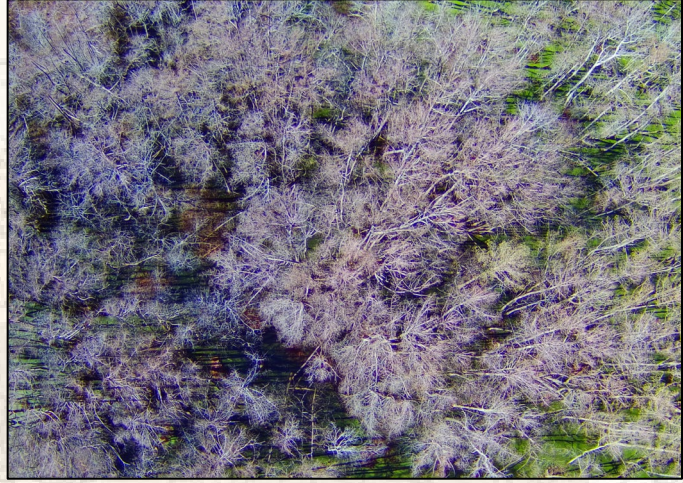
O: 769-888-2522

chris.reed@smalltownproperties.com

4848 Main St. - Flora, MS 39071

smalltownproperties.com

Information is believed to be accurate but not guaranteed.



SMALLTOWN

HUNTING PROPERTIES
& REAL ESTATESM

CHRIS REED

LAND SPECIALIST

C: 601-906-0723

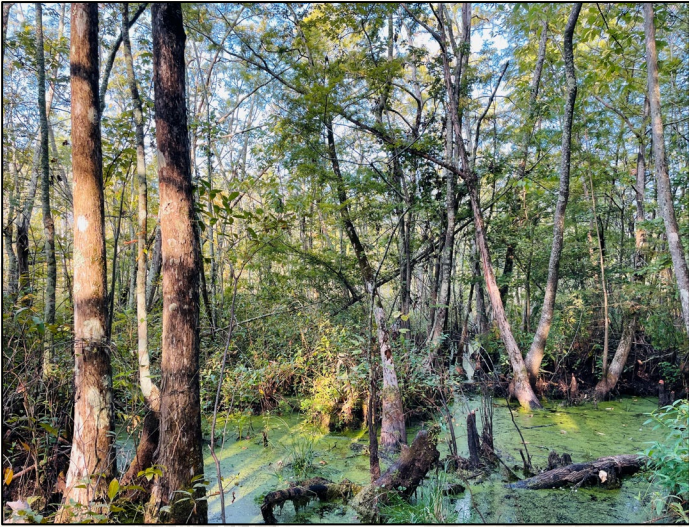
O: 769-888-2522

chris.reed@smalltownproperties.com

4848 Main St. - Flora, MS 39071

smalltownproperties.com

Information is believed to be accurate but not guaranteed.



SMALLTOWN

HUNTING PROPERTIES
& REAL ESTATESM

CHRIS REED
LAND SPECIALIST
C: 601-906-0723
O: 769-888-2522
chris.reed@smalltownproperties.com

4848 Main St. - Flora, MS 39071

smalltownproperties.com

Information is believed to be accurate but not guaranteed.



SMALLTOWN

HUNTING PROPERTIES
& REAL ESTATESM

CHRIS REED

LAND SPECIALIST

C: 601-906-0723

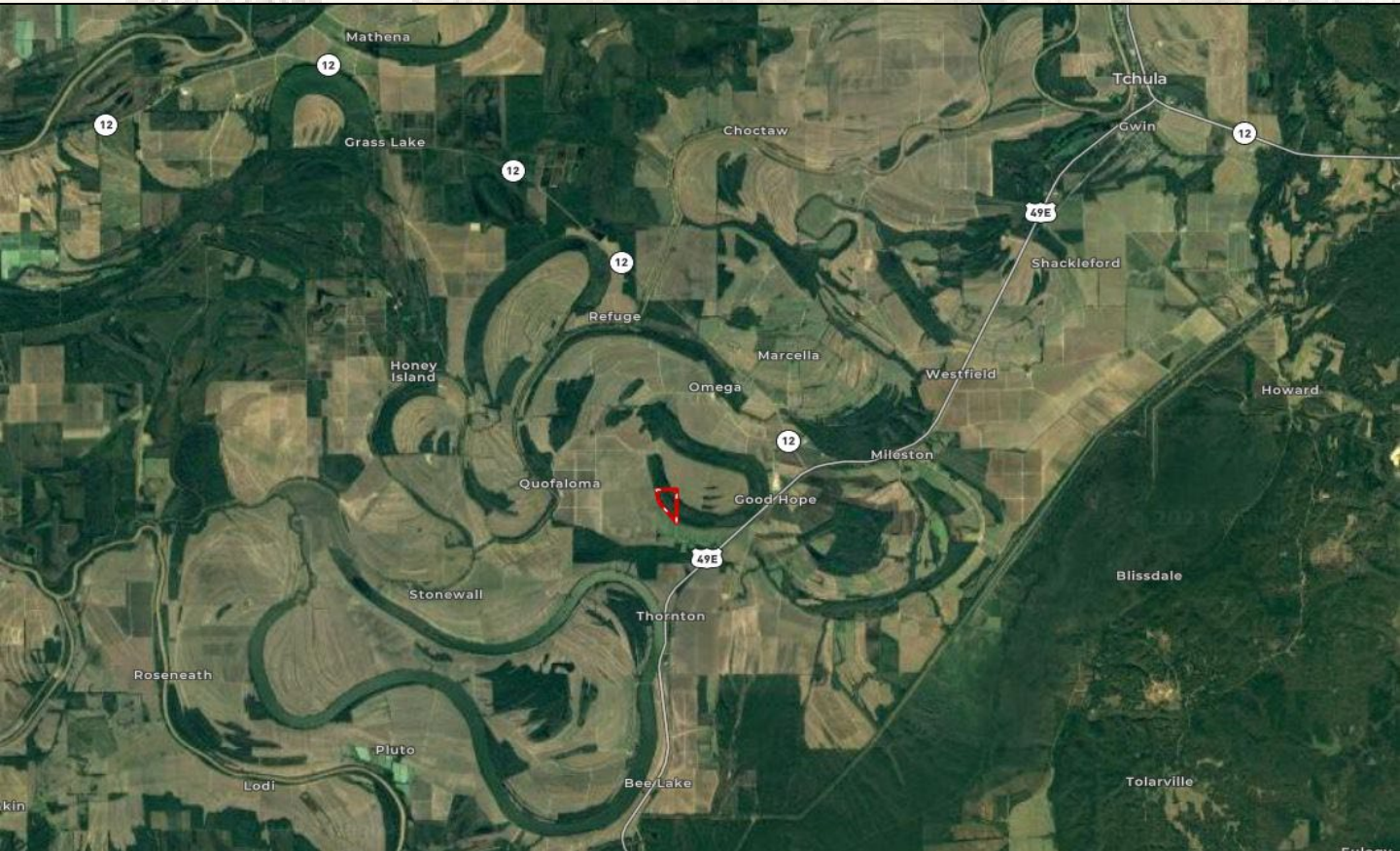
O: 769-888-2522

chris.reed@smalltownproperties.com

4848 Main St. - Flora, MS 39071

smalltownproperties.com

Information is believed to be accurate but not guaranteed.



SMALLTOWN

HUNTING PROPERTIES
& REAL ESTATESM

CHRIS REED

LAND SPECIALIST

C: 601-906-0723

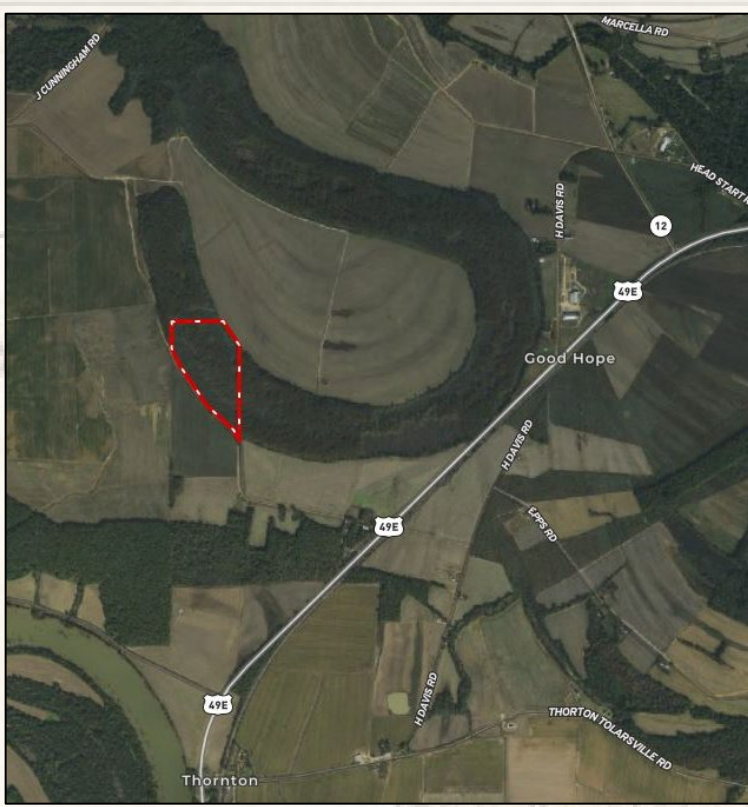
O: 769-888-2522

chris.reed@smalltownproperties.com

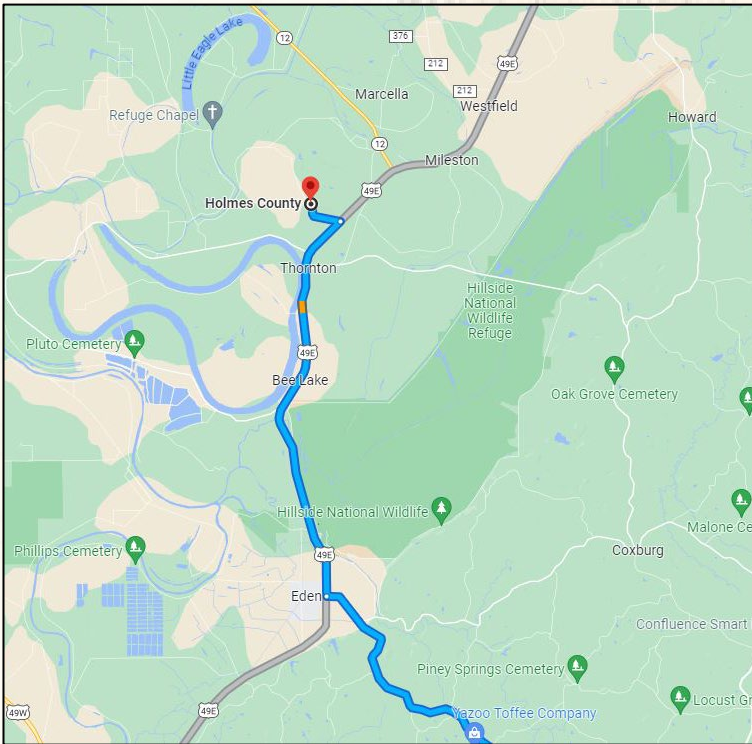
4848 Main St. - Flora, MS 39071

smalltownproperties.com

Information is believed to be accurate but not guaranteed.



[Land ID Link](#)



[Google Maps Link](#)



SMALLTOWN
HUNTING PROPERTIES
& REAL ESTATESM

CHRIS REED

LAND SPECIALIST

C: 601-906-0723

O: 769-888-2522

chris.reed@smalltownproperties.com

4848 Main St. - Flora, MS 39071

smalltownproperties.com

Information is believed to be accurate but not guaranteed.