

40± Acre Wayne County, MS

\$100,000



SMALLTOWN

**HUNTING PROPERTIES
& REAL ESTATESM**

Office 769-760-0005

Property Profile

Timberland in Wayne County, MS

Location:

- Wayne County, MS
- 37± Miles East of Hattiesburg, MS

Coordinates:

- 31.439053, -88.916165

Property Information:

- 40± Acres
- Loblolly Pine Plantation
- Mixed Hardwood
- Gently Rolling Terrain
- Borders Chickasawhay WMA

Property Use:

- Hunting
- Timber Investment

Tax Information:

- Parcel 215-32-00000200: \$150.45 for 2022



SMALLTOWN
HUNTING PROPERTIES
& REAL ESTATESM

DENNIS WEST

EAST MISSISSIPPI MANAGING BROKER

ALABAMA QUALIFYING BROKER

LOUISIANA ASSOCIATE BROKER

C: 601-248-4396 | O: 769-760-0005

dennis@smalltownproperties.com

4848 Main St. - Flora, MS 39071

smalltownproperties.com

TIMBERLAND IN WAYNE COUNTY, MS!
This +/-40 Acres in Wayne County is located in the Southwest part of the county and borders the Chickasawhay WMA.

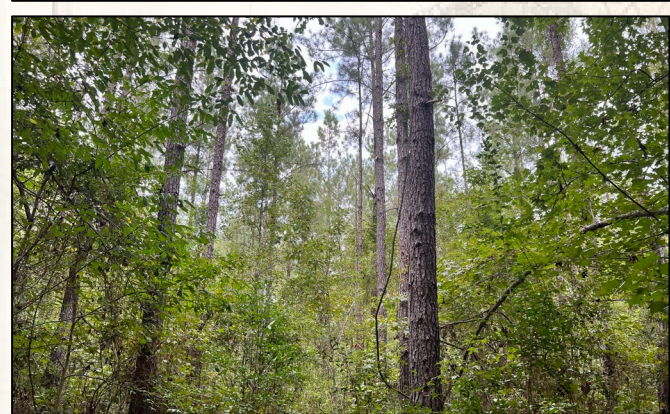
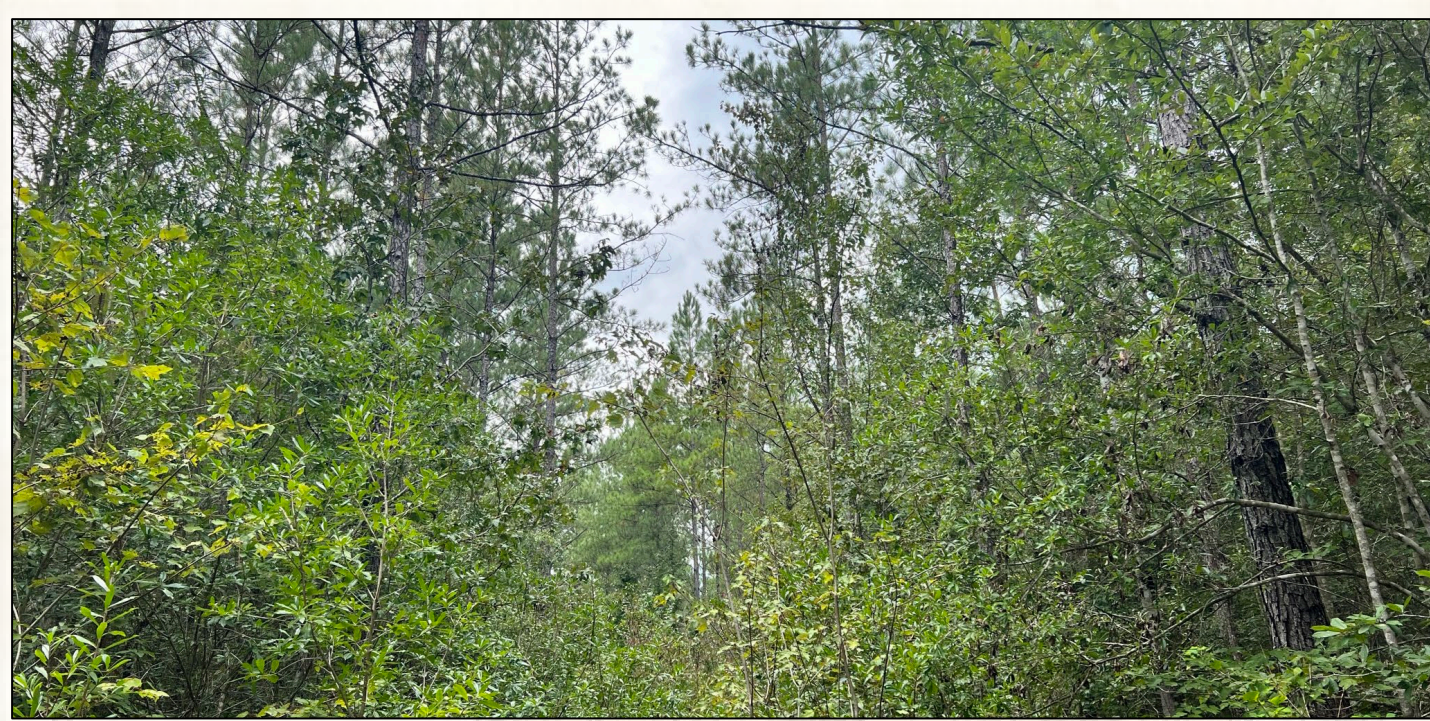


SMALLTOWN
HUNTING PROPERTIES
& REAL ESTATESM



DENNIS WEST
EAST MISSISSIPPI MANAGING BROKER
ALABAMA QUALIFYING BROKER
LOUISIANA ASSOCIATE BROKER
C: 601-248-4396 | O: 769-760-0005
dennis@smalltownproperties.com
4848 Main St. - Flora, MS 39071
smalltownproperties.com

Information is believed to be accurate but not guaranteed.



The terrain is gently rolling to flat. The timber is mostly 20+ year old planted loblolly pine and some mixed hardwood. This property has no legal access. This property borders the Wayne-Perry 157 acres (MLS #33338). Call Dennis West today to arrange a showing.



SMALLTOWN
HUNTING PROPERTIES
& REAL ESTATESM

DENNIS WEST

EAST MISSISSIPPI MANAGING BROKER

ALABAMA QUALIFYING BROKER

LOUISIANA ASSOCIATE BROKER

C: 601-248-4396 | O: 769-760-0005

dennis@smalltownproperties.com

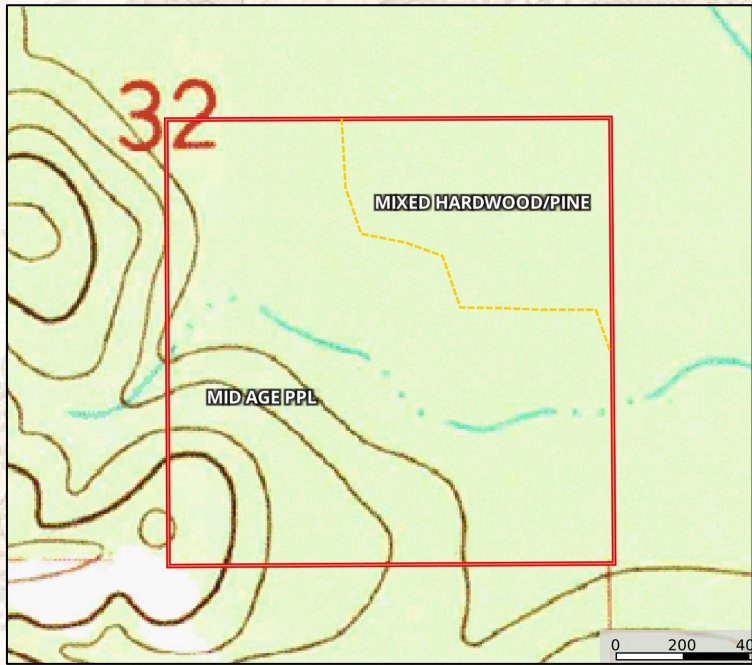
4848 Main St. - Flora, MS 39071

smalltownproperties.com



[MapRight Link](#)

[Google Map Link](#)



SMALLTOWN
HUNTING PROPERTIES
& REAL ESTATESM

DENNIS WEST

EAST MISSISSIPPI MANAGING BROKER

ALABAMA QUALIFYING BROKER

LOUISIANA ASSOCIATE BROKER

C: 601-248-4396 | O: 769-760-0005

dennis@smalltownproperties.com

4848 Main St. - Flora, MS 39071

smalltownproperties.com

