

9.3± Acres in Hinds County, MS
\$115,000



SMALLTOWN
HUNTING PROPERTIES
& REAL ESTATESM

Office 769-888-2522

Property Profile

The Hinds 9.3

Location:

- Hinds County
- Highway 18 Frontage
- 14± Miles South of Raymond
- 27± Miles South of Vicksburg
- 29± Miles South of Jackson

Coordinates:

- 32.1229, -90.5819

Property Information:

- 9.3± Total Acres
- 8± Acres of Pasture Ground
- Homesite
- Mini-Farm
- Deer, Dove Hunting Out Your Backdoor
- Power/Water Available
- Final Acreage & Boundary to Be Determined by Survey

Property Use:

- Homesite
- Hunting
- Farm
- Investment

Tax Information: Taxes To Be Determined at Closing



SMALLTOWN
HUNTING PROPERTIES
& REAL ESTATESM

CHRIS REED

LAND SPECIALIST

C: 601-906-0723

O: 769-888-2522

chris.reed@smalltownproperties.com

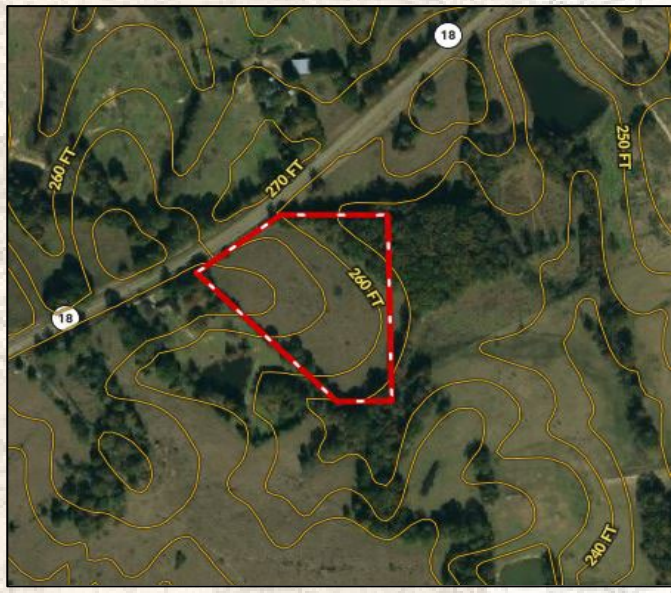
4848 Main St. - Flora, MS 39071

smalltownproperties.com

Information is believed to be accurate but not guaranteed.



Welcome to the Hinds 9.3, the perfect opportunity to experience country living at its finest. Located in southwestern Hinds County, MS, this property offers plenty of room to design and build your dream house or country cabin, taking in the gorgeous views of the pasture's rolling hills and watching wildlife from your back porch. The property consists of 8± acres of open pasture ground, currently utilized as a hayfield, with the remaining 1.3 acres in nice hardwoods on the northeast portion.



SMALLTOWN

HUNTING PROPERTIES
& REAL ESTATESM

CHRIS REED
LAND SPECIALIST
C: 601-906-0723
O: 769-888-2522
chris.reed@smalltownproperties.com

4848 Main St. - Flora, MS 39071

smalltownproperties.com

Information is believed to be accurate but not guaranteed.



The open pasture provides opportunities for grazing if you want to create your own mini-farm or maybe carve out a nice pond. If having a place to hunt right outside your backdoor is what you desire, there are multiple spots to have a food plot or dove field. The choice is yours! Enjoy the seclusion this property offers and call Chris Reed today to schedule your private showing.



SMALLTOWN

HUNTING PROPERTIES
& REAL ESTATESM

CHRIS REED

LAND SPECIALIST

C: 601-906-0723

O: 769-888-2522

chris.reed@smalltownproperties.com

4848 Main St. - Flora, MS 39071

smalltownproperties.com

Information is believed to be accurate but not guaranteed.



SMALLTOWN

HUNTING PROPERTIES
& REAL ESTATESM

CHRIS REED

LAND SPECIALIST

C: 601-906-0723

O: 769-888-2522

chris.reed@smalltownproperties.com

4848 Main St. - Flora, MS 39071

smalltownproperties.com

Information is believed to be accurate but not guaranteed.



SMALLTOWN

HUNTING PROPERTIES
& REAL ESTATESM

CHRIS REED

LAND SPECIALIST

C: 601-906-0723

O: 769-888-2522

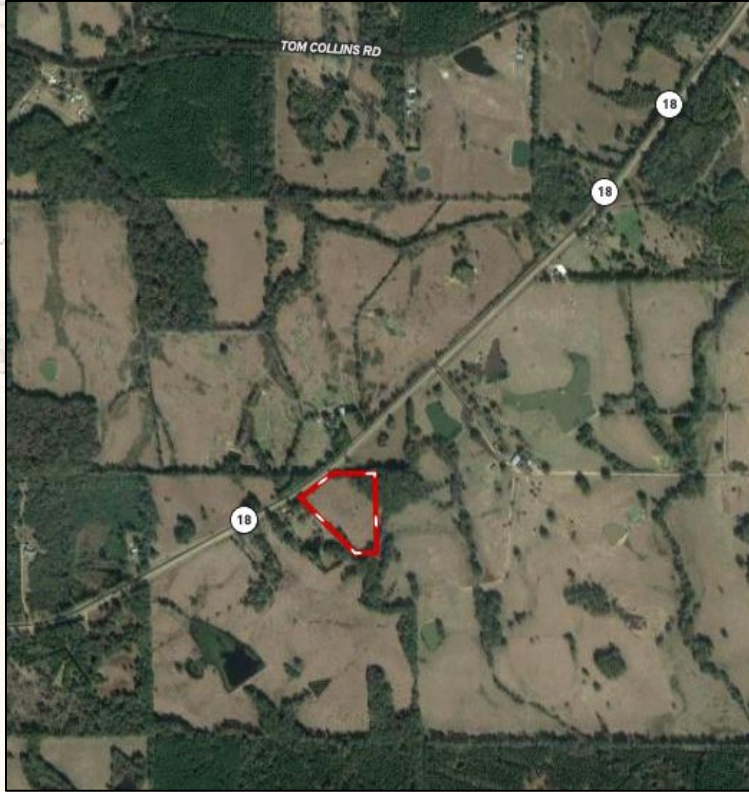
chris.reed@smalltownproperties.com

4848 Main St. - Flora, MS 39071

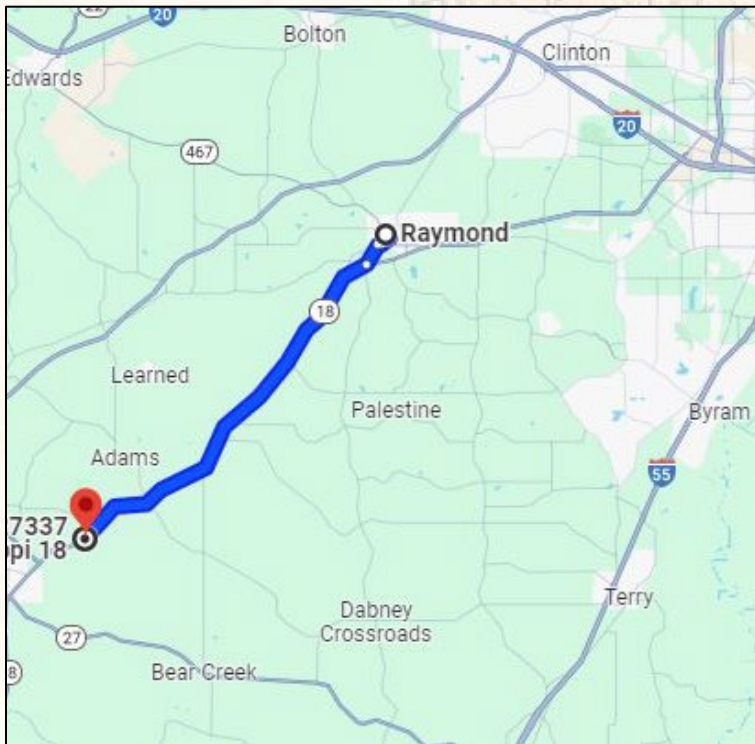
smalltownproperties.com

Information is believed to be accurate but not guaranteed.





[Land ID Link](#)



[Google Maps Link](#)



SMALLTOWN
HUNTING PROPERTIES
& REAL ESTATESM

CHRIS REED

LAND SPECIALIST

C: 601-906-0723

O: 769-888-2522

chris.reed@smalltownproperties.com

4848 Main St. - Flora, MS 39071

smalltownproperties.com

Information is believed to be accurate but not guaranteed.