

40.66± Acres in Copiah County, MS

\$88,000



SMALLTOWN

**HUNTING PROPERTIES
& REAL ESTATESM**

769.888.2522 office

Property Profile

Copiah 40.66

Location:

- Copiah County, MS
- Accessed by a Deeded Easement off of Norman Road
- 7.5± Miles North of Hazlehurst
- 159± Miles from New Orleans

Coordinates:

- 31.92001, -90.44415

Property Information:

- 40.66± Acres
- Great Wildlife Habitat
- Hardwood and Pine Mix
- Close Proximity to I-55

Property Use:

- Recreational
- Hunting
- Investment

Tax Information: 2022 \$148.46

- Parcel 1# 1-072-18-008.00



SMALLTOWN
HUNTING PROPERTIES
& REAL ESTATESM

LUKE SANDERS

LAND SPECIALIST

C: 601-953-3535

O: 769-888-2522

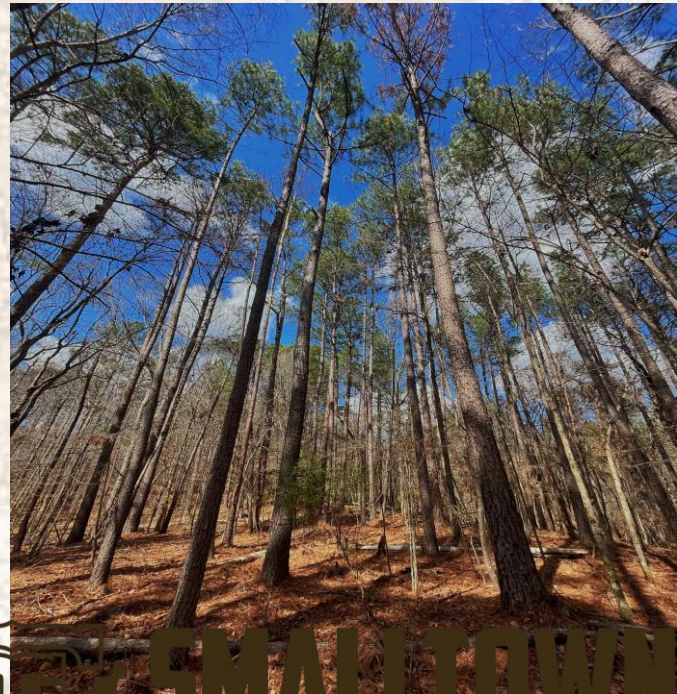
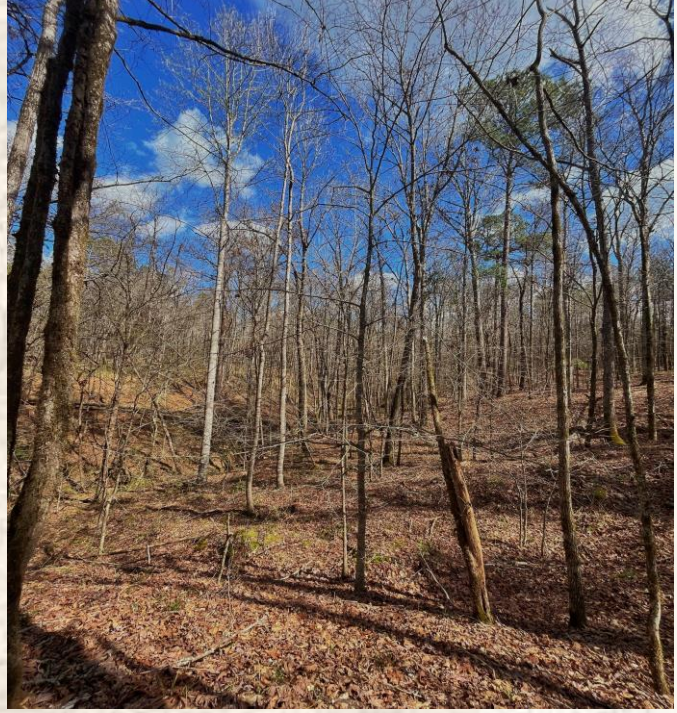
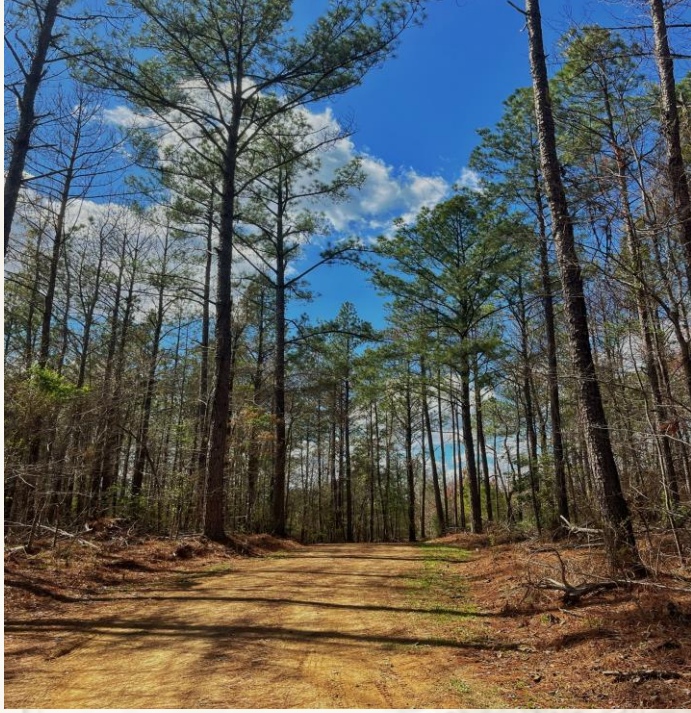
luke@smalltownproperties.com

P.O. Box K - Flora, MS 39071

smalltownproperties.com

Information is believed to be accurate but not guaranteed.

Are you looking for an affordable property to call your own? The Copiah 40.66 could be the one! Located approximately 7.5 miles Northwest of Hazlehurst in Copiah County, MS, This 40.66+/- acre property is accessed by a 250' deeded easement off Norman Road. This tract is perfect for someone looking for a clean slate.



SMALLTOWN
HUNTING PROPERTIES
& REAL ESTATESM

LUKE SANDERS

LAND SPECIALIST

C: 601-953-3535

O: 769-888-2522

luke@smalltownproperties.com

P.O. Box K - Flora, MS 39071

smalltownproperties.com

Information is believed to be accurate but not guaranteed.

The property is made up of a good mixture of hardwood and pine timber creating the perfect opportunity for all wildlife species. If you have been looking for a timber tract that you can develop just the way you want, give Luke Sanders a call today!



SMALLTOWN
HUNTING PROPERTIES
& REAL ESTATESM

LUKE SANDERS

LAND SPECIALIST

C: 601-953-3535

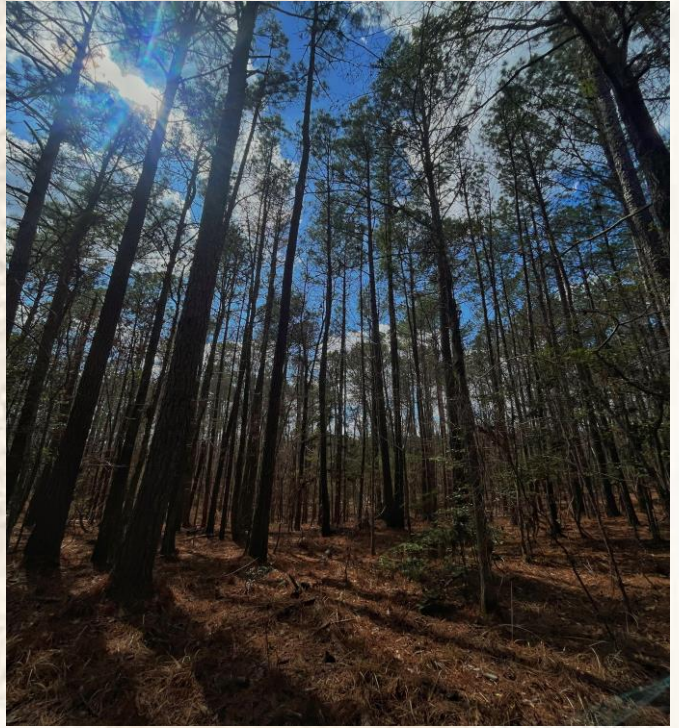
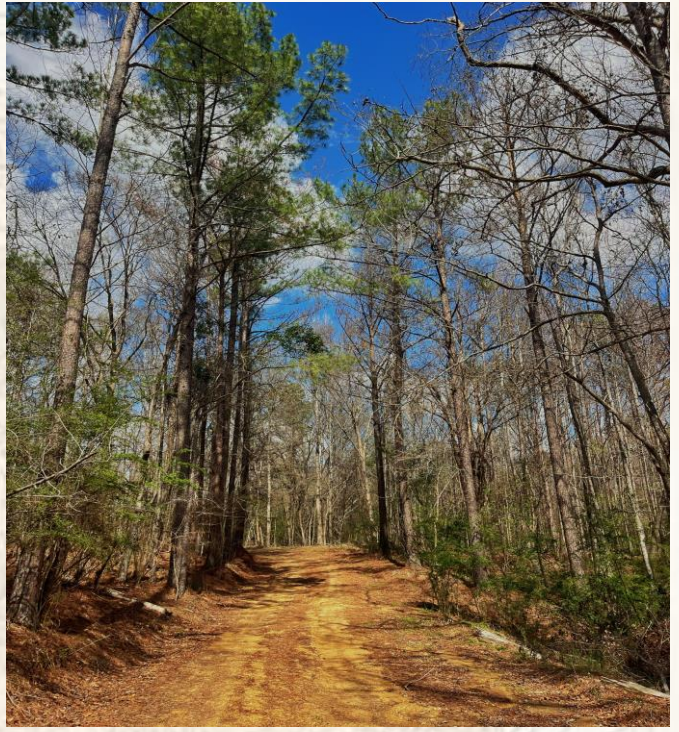
O: 769-888-2522

luke@smalltownproperties.com

P.O. Box K - Flora, MS 39071

smalltownproperties.com

Information is believed to be accurate but not guaranteed.



SMALLTOWN

**HUNTING PROPERTIES
& REAL ESTATESM**

LUKE SANDERS

LAND SPECIALIST

C: 601-953-3535

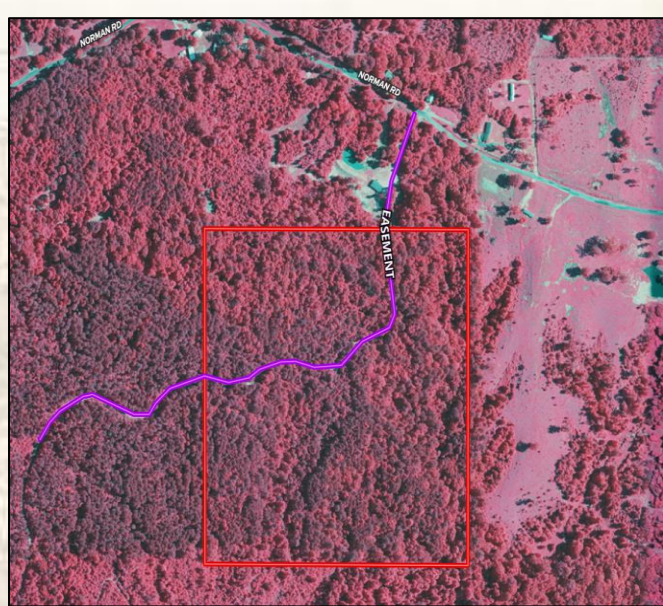
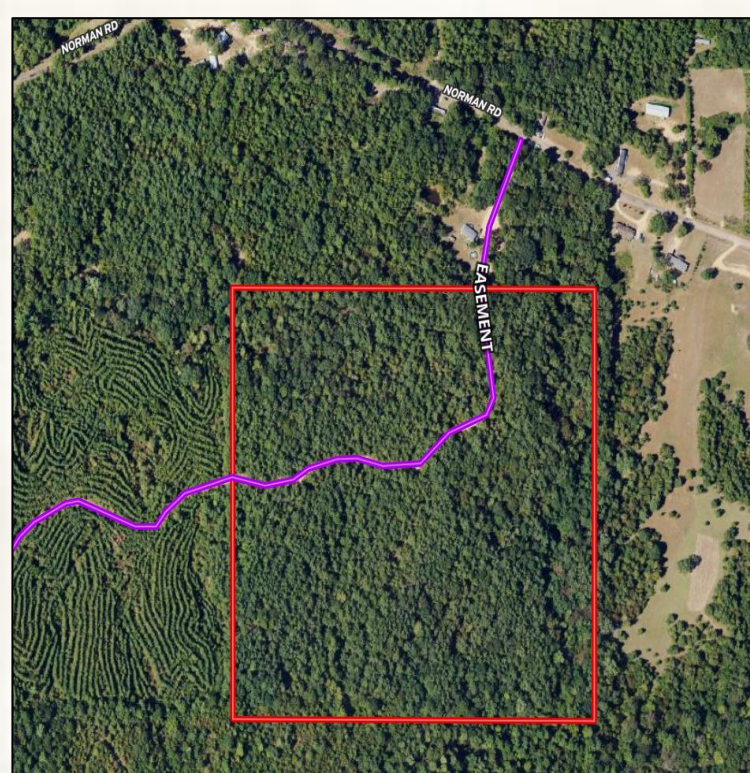
O: 769-888-2522

luke@smalltownproperties.com

P.O. Box K - Flora, MS 39071

smalltownproperties.com

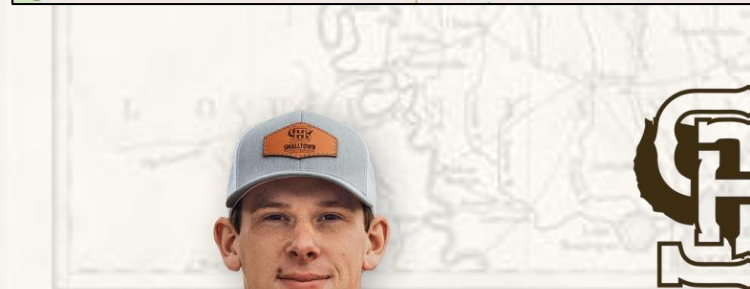
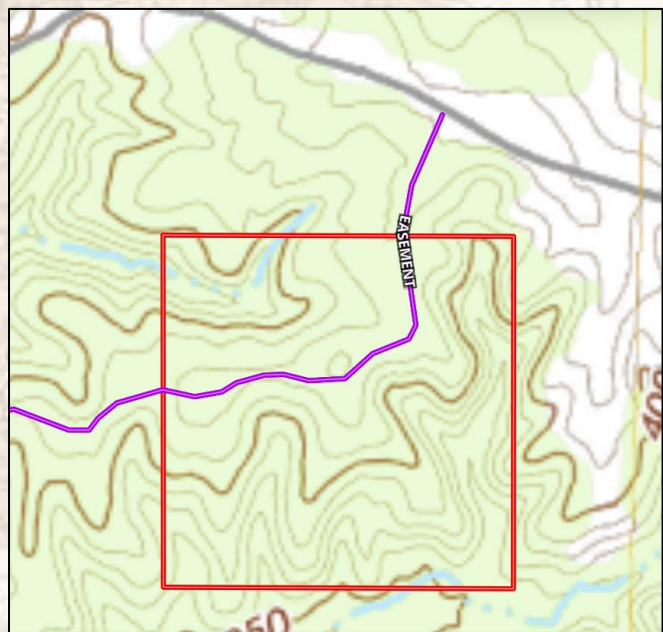
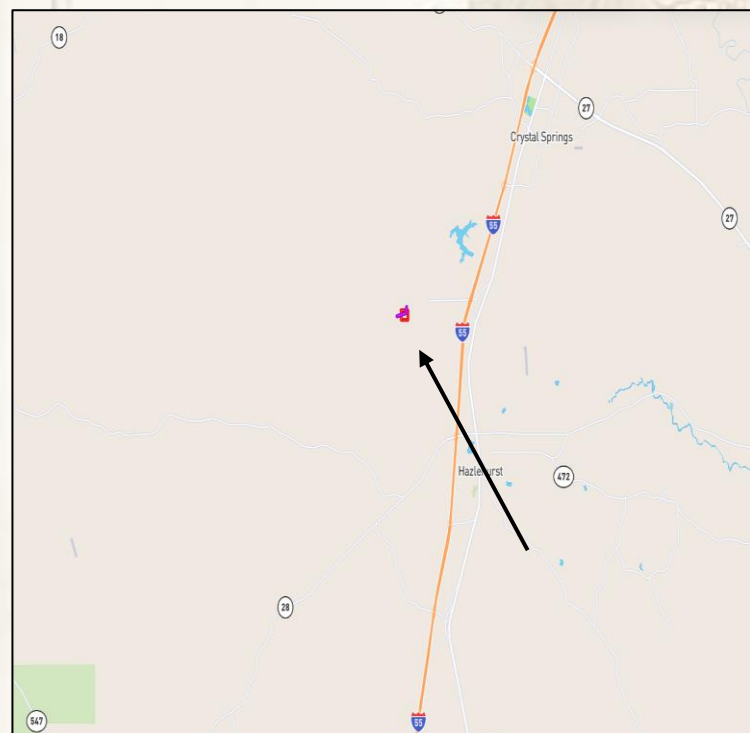
Information is believed to be accurate but not guaranteed.



[Land ID Link](#)

[Google Map Link](#)

- 40.66± Total Acres
- 7.5± Miles Northwest of Hazlehurst
- 159± Miles From New Orleans



SMALLTOWN
HUNTING PROPERTIES
& REAL ESTATESM

LUKE SANDERS

LAND SPECIALIST

C: 601-953-3535

O: 769-888-2522

luke@smalltownproperties.com

P.O. Box K - Flora, MS 39071

smalltownproperties.com

Information is believed to be accurate but not guaranteed.