

51.93± ACRES
WHITFIELD COUNTY, GA
\$799,000



SMALLTOWN
HUNTING PROPERTIES
& REAL ESTATESM

OFFICE (769) 888-2522

THE WHITFIELD 51.93

PROPERTY PROFILE

LOCATION:

- Whitfield County, GA
- 4± Miles from Dalton
- 26± Miles from Ringgold
- 20.3± Miles from Calhoun
- 88± Miles from Atlanta
- 37± Miles from Chattanooga, TN

COORDINATES:

- 34.7398141, -84.9245779

PROPERTY USE:

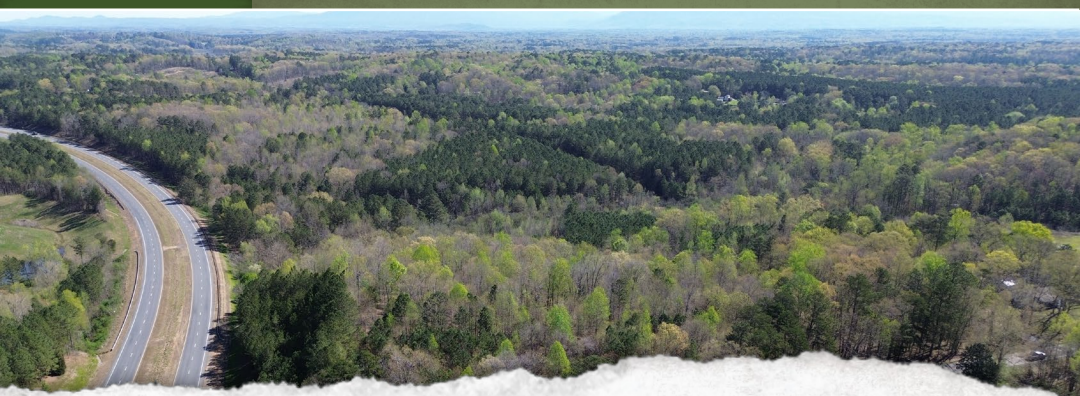
- Industrial
- Development

PROPERTY INFORMATION:

- 51.93± Acres
- Zoned M2 (Heavy Manufacturing)
- Pipeline Easement
- Creek
- Wooded
- 2,400' of Frontage on the South Bypass

TAX INFORMATION:

- Parcel: 12-290-28-000
- \$2,539.83



SMALLTOWN
HUNTING PROPERTIES
& REAL ESTATESM

JUSTIN HASTY

LAND SPECIALIST

C: 706-671-4554

O: 769-888-2522

justin@smalltownproperties.com

P.O. Box 340 - Rocky Face, GA 30740

smalltownproperties.com

Information is believed to be accurate but not guaranteed.

WELCOME TO THE WHITFIELD 51.93

INVESTORS, DEVELOPERS, BUSINESS OWNERS! Consider this 51.93± acre tract of land for your next project. Situated in Whitfield County, GA off Ridge Road, the property is zoned M-2, heavy manufacturing. One of the highlights is the 2,400± feet of frontage on the South Bypass. Take advantage of the convenient location here in the carpet capital of the world!

Call Justin Hasty today to schedule a showing.



SMALLTOWN
HUNTING PROPERTIES
& REAL ESTATESM

JUSTIN HASTY

LAND SPECIALIST

C: 706-671-4554

O: 769-888-2522

justin@smalltownproperties.com

P.O. Box 340 - Rocky Face, GA 30740

smalltownproperties.com

Information is believed to be accurate but not guaranteed.

51.93± ACRES

WHITFIELD COUNTY, GEORGIA



SMALLTOWN
HUNTING PROPERTIES
& REAL ESTATESM

JUSTIN HASTY

LAND SPECIALIST

C: 706-671-4554

O: 769-888-2522

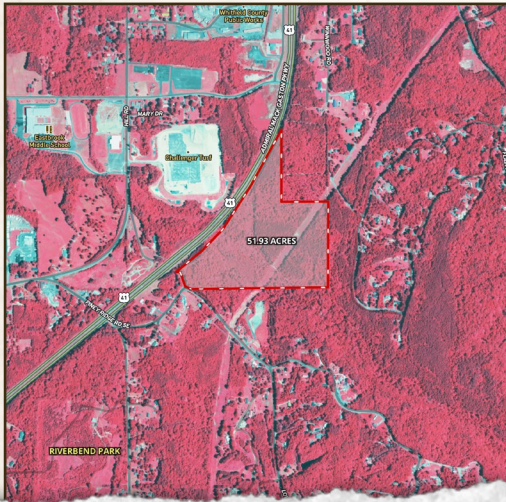
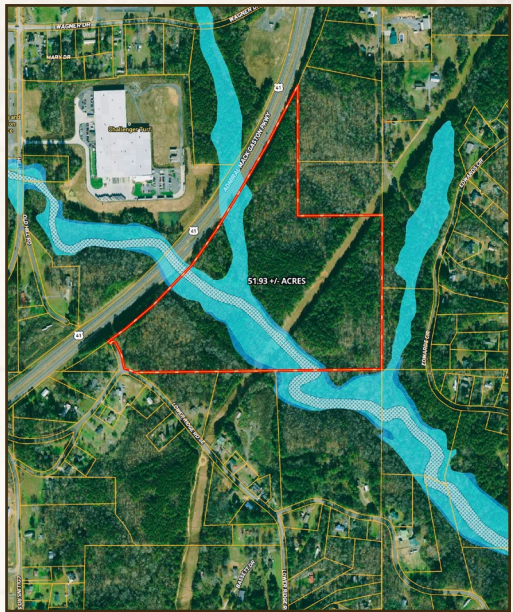
justin@smalltownproperties.com

P.O. Box 340 - Rocky Face, GA 30740

smalltownproperties.com

Information is believed to be accurate but not guaranteed.





SMALLTOWN

HUNTING PROPERTIES
& REAL ESTATESM

JUSTIN HASTY

LAND SPECIALIST

C: 706-671-4554

O: 769-888-2522

justin@smalltownproperties.com

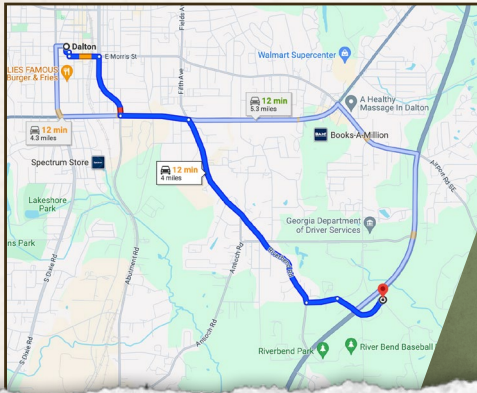
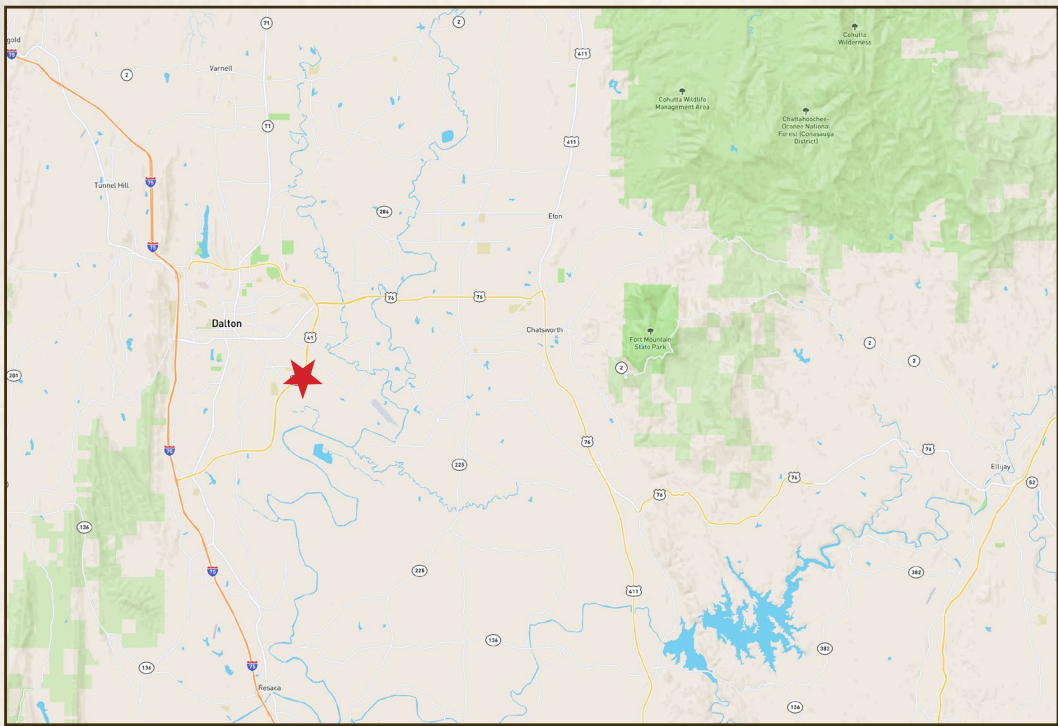
P.O. Box 340 - Rocky Face, GA 30740

smalltownproperties.com

Information is believed to be accurate but not guaranteed.

51.93± ACRES

WHITFIELD COUNTY, GEORGIA



Directions From Downtown Dalton:
Travel south and turn left on W. Morris Street. Then turn right onto S. Glenwood Avenue. Turn left onto GA-52 E. Turn right onto Riverbend Road. Then turn left onto US-41.

LINK TO GOOGLE MAP DIRECTIONS



SMALLTOWN
HUNTING PROPERTIES
& REAL ESTATESM

JUSTIN HASTY
LAND SPECIALIST
C: 706-671-4554
O: 769-888-2522
justin@smalltownproperties.com
P.O. Box 340 - Rocky Face, GA 30740
smalltownproperties.com

Information is believed to be accurate but not guaranteed.