

**6.2± ACRES**  
**BIENVILLE PARISH, LA**  
**\$15,000**



**SMALLTOWN**  
HUNTING PROPERTIES  
& REAL ESTATE<sup>SM</sup>

**OFFICE (769) 888-2522**

# THE BIENVILLE 6.2

## PROPERTY PROFILE

### LOCATION:

- Quitman, LA 71268
- Bienville Parish
- Frontage on Denton Road
- Located in Section 8, Township 16, Range 4W

### COORDINATES:

- 32.38494, -92.80744

### TAX INFORMATION:

- Tax Year 2023 \$20.73
- Parcel Id: 100012740

### PROPERTY USE:

- Deer, Turkey, and Small Game Hunting
- Potential Campsite

### PROPERTY INFORMATION:

- 6.2± Acres
- Pipeline Traverses Property
- Surrounded by Large Acreage Tracts



**SMALLTOWN**  
HUNTING PROPERTIES  
& REAL ESTATE<sup>SM</sup>

**HEATH EUBANKS**

LAND SPECIALIST

C: 318-608-7848

O: 769-888-2522

[heath@smalltownproperties.com](mailto:heath@smalltownproperties.com)

4848 Main St. - Flora, MS 39071

[smalltownproperties.com](http://smalltownproperties.com)

Information is believed to be accurate but not guaranteed.

# WELCOME TO THE BIENVILLE 6.2

WELCOME TO THE BIENVILLE 6.2. SITUATED IN QUITMAN, LOUISIANA OFF DENTON ROAD, THIS 6.2± ACRE PROPERTY OFFERS AMPLE OPPORTUNITY FOR HUNTING. While the Bienville Parish acreage is small, the layout is big! The long but narrow tract provides a couple of different options for spots for deer stands. A pipeline traverses long ways through the property making a great place for a box stand. Upon initial evaluation of the property, numerous deer were seen around and on the property, and an abundance of deer sign was also noted. This tract has thousands of acres of backup offering great habitat for miles. During the springtime, bet you could catch a turkey slipping through, as well. The Bienville 6.2 would make for an off-the-grid campsite, also.

To learn more about this property and to schedule a private showing, call Heath Eubanks today!



**SMALLTOWN**  
HUNTING PROPERTIES  
& REAL ESTATE<sup>SM</sup>

**HEATH EUBANKS**

LAND SPECIALIST

C: 318-608-7848

O: 769-888-2522

[heath@smalltownproperties.com](mailto:heath@smalltownproperties.com)

4848 Main St. - Flora, MS 39071

[smalltownproperties.com](http://smalltownproperties.com)

Information is believed to be accurate but not guaranteed.

6.2 ± ACRES

BIENVILLE PARISH, LOUISIANA



**SMALLTOWN**  
HUNTING PROPERTIES  
& REAL ESTATE<sup>SM</sup>

**HEATH EUBANKS**

LAND SPECIALIST

C: 318-608-7848

O: 769-888-2522

[heath@smalltownproperties.com](mailto:heath@smalltownproperties.com)

4848 Main St. - Flora, MS 39071

[smalltownproperties.com](http://smalltownproperties.com)

Information is believed to be accurate but not guaranteed.

6.2 ± ACRES

BIENVILLE PARISH, LOUISIANA



**SMALLTOWN**  
HUNTING PROPERTIES  
& REAL ESTATE<sup>SM</sup>

**HEATH EUBANKS**

LAND SPECIALIST

C: 318-608-7848

O: 769-888-2522

[heath@smalltownproperties.com](mailto:heath@smalltownproperties.com)

4848 Main St. - Flora, MS 39071

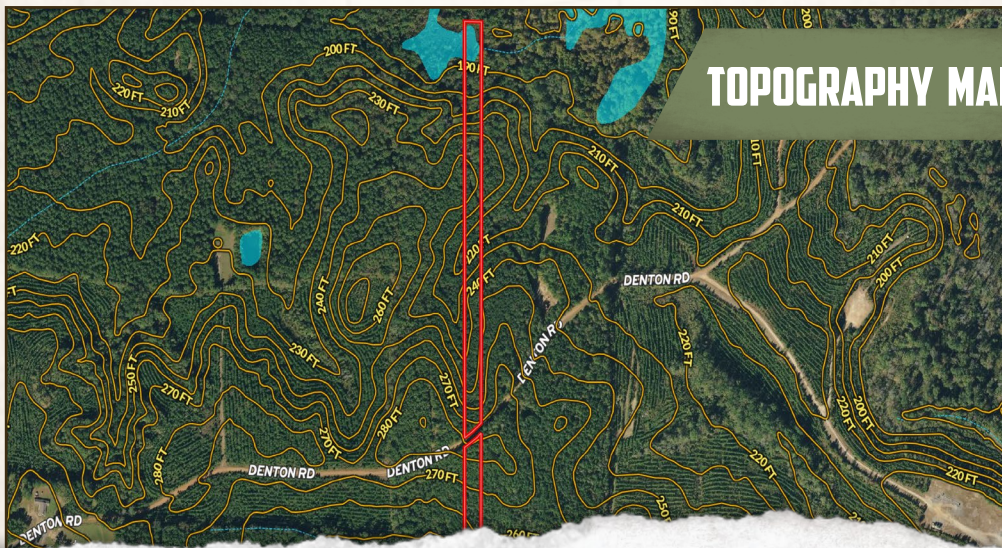
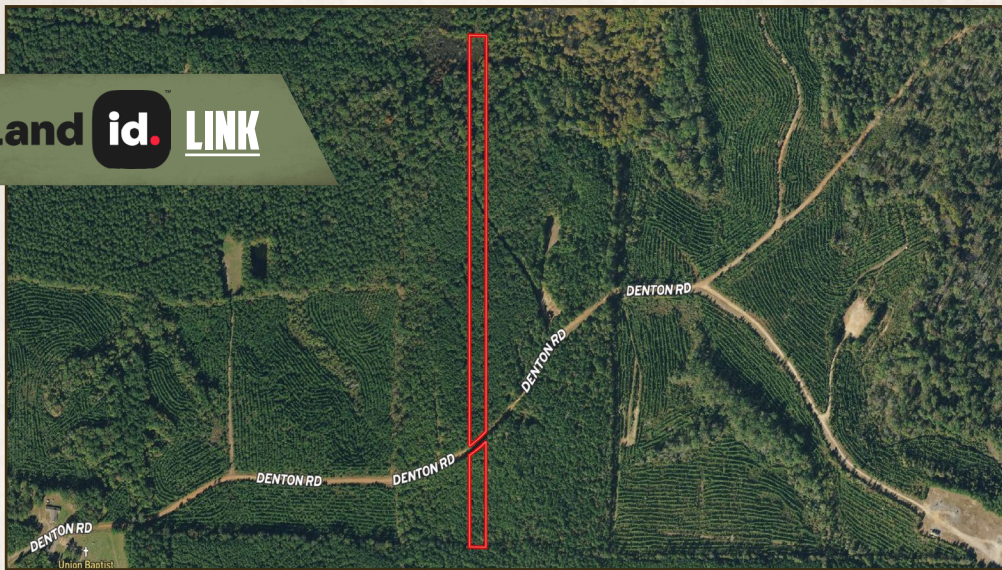
[smalltownproperties.com](http://smalltownproperties.com)

Information is believed to be accurate but not guaranteed.

6.2 ± ACRES

BIENVILLE PARISH, LOUISIANA

land id. LINK



**SMALLTOWN**  
HUNTING PROPERTIES  
& REAL ESTATE<sup>SM</sup>

**HEATH EUBANKS**

LAND SPECIALIST

C: 318-608-7848

O: 769-888-2522

[heath@smalltownproperties.com](mailto:heath@smalltownproperties.com)

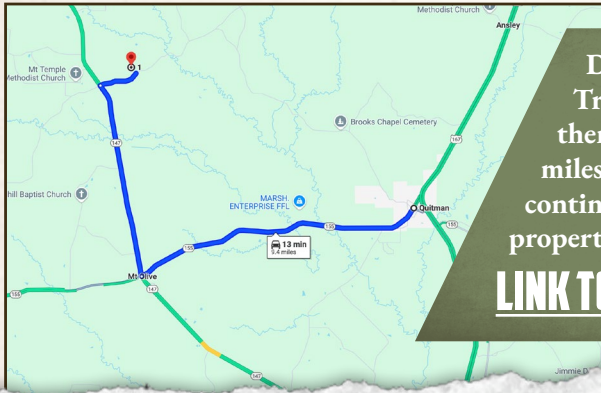
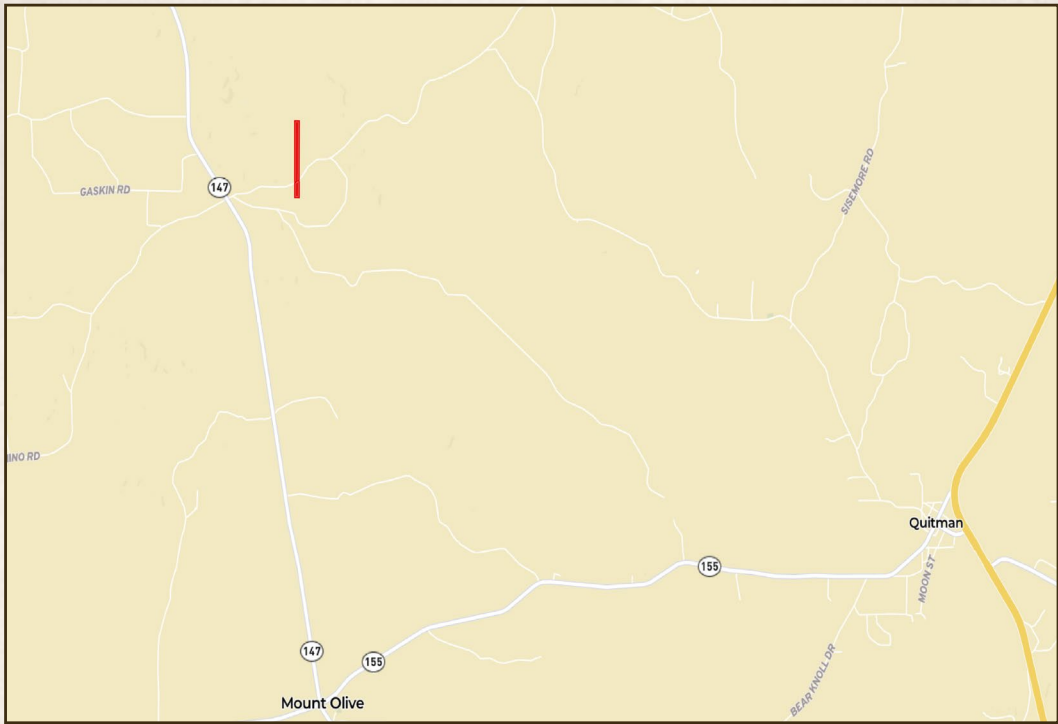
4848 Main St. - Flora, MS 39071

[smalltownproperties.com](http://smalltownproperties.com)

Information is believed to be accurate but not guaranteed.

6.2 ± ACRES

BIENVILLE PARISH, LOUISIANA



Directions from Quitman, LA:  
Travel west on HWY 155 for 5 miles,  
then go north on LA-147 for 3.5  
miles. Turn right on Denton Road and  
continue for approximately .5 miles. The  
property is on both sides of Denton Road.

**LINK TO GOOGLE MAP DIRECTIONS**



**SMALLTOWN**  
HUNTING PROPERTIES  
& REAL ESTATE<sup>SM</sup>

**HEATH EUBANKS**

LAND SPECIALIST

C: 318-608-7848

O: 769-888-2522

heath@smalltownproperties.com

4848 Main St. - Flora, MS 39071

smalltownproperties.com

Information is believed to be accurate but not guaranteed.