

9± ACRES
LAFAYETTE COUNTY, MS
\$135,000

PRIVATE
PROPERTY
NO TRESPASSING



SMALLTOWN
HUNTING PROPERTIES
& REAL ESTATESM

OFFICE (662) 238-4077

THE LAFAYETTE 9

PROPERTY PROFILE

LOCATION:

- County Road 461
Oxford, MS 38655
- Lafayette County
- 12.2± Miles E of Oxford

COORDINATES:

- 34.3067, -89.3502

PROPERTY USE:

- Residential
- Recreation
- Investment

PROPERTY INFORMATION:

- 9± Acres
- Utilities Available
- Beautiful Wooded Homesite
- County Road Frontage
- Lafayette County School District

TAX INFORMATION:

- 2023 - Calculated at Closing
- Parcel # 204-18-008



SMALLTOWN
HUNTING PROPERTIES
& REAL ESTATESM

LUKE GOSSETT

LAND SPECIALIST

C: 662-832-8822

O: 662-238-4077

lgossett@smalltownproperties.com

50 CR 401 - Oxford, MS 38655

smalltownproperties.com

Information is believed to be accurate but not guaranteed.

WELCOME TO THE LAFAYETTE 9

WELCOME TO YOUR FUTURE HOME SITE, KNOWN AS "THE LAFAYETTE 9". Situated just off County Road 461 in Lafayette County, MS, this property offers a mix of timber for the perfect backdrop for your dream home. From the south end to the north end, the 9± acre tract features a steady incline, offering multiple home sites to choose from. Utilities are available. For convenience, this property is located approximately 15 minutes to town. The property is zoned in the Lafayette County School District.

Small tracts at an affordable price can be a hard find; act quickly on this home site that gives the country feel! Call Luke Gossett today to schedule a private showing of The Lafayette 9!



SMALLTOWN
HUNTING PROPERTIES
& REAL ESTATESM

LUKE GOSSETT

LAND SPECIALIST

C: 662-832-8822

O: 662-238-4077

lgossett@smalltownproperties.com

50 CR 401 - Oxford, MS 38655

smalltownproperties.com

Information is believed to be accurate but not guaranteed.

9 ± ACRES

LAFAYETTE COUNTY, MISSISSIPPI



SMALLTOWN
HUNTING PROPERTIES
& REAL ESTATESM

LUKE GOSSETT

LAND SPECIALIST

C: 662-832-8822

O: 662-238-4077

lgossett@smalltownproperties.com

50 CR 401 - Oxford, MS 38655

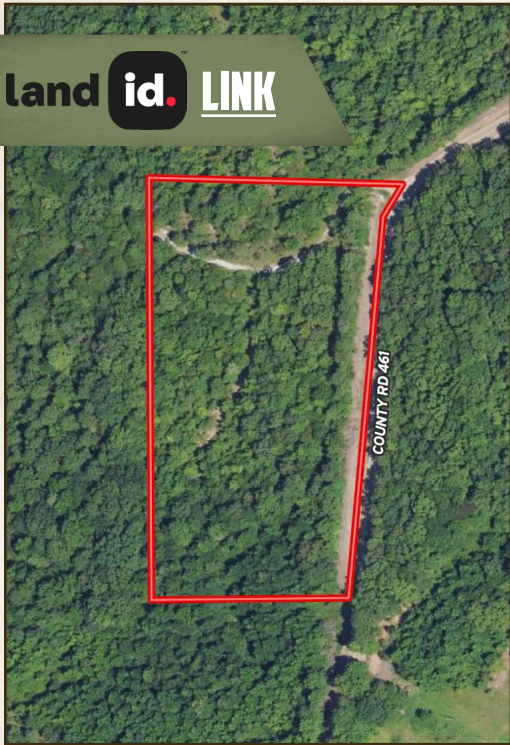
smalltownproperties.com

Information is believed to be accurate but not guaranteed.

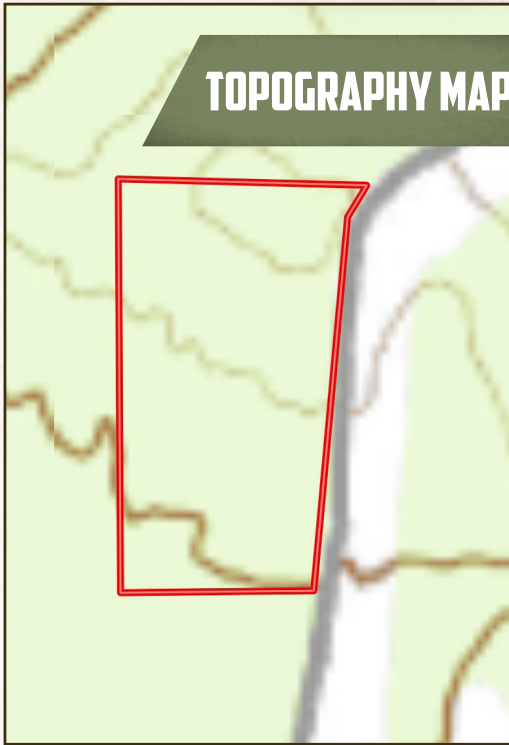
9 ± ACRES

LAFAYETTE COUNTY, MISSISSIPPI

land id. LINK



TOPOGRAPHY MAP



Directions From the Intersection of MS Hwy 7 and MS Hwy: Travel east on Hwy 6 for 10.3 miles and turn right on CR 423. Proceed for 0.4 miles then turn right onto CR 461. In 0.4 miles the destination is on your right.

[LINK TO GOOGLE MAP DIRECTIONS](#)



SMALLTOWN
HUNTING PROPERTIES
& REAL ESTATESM

LUKE GOSSETT

LAND SPECIALIST

C: 662-832-8822

O: 662-238-4077

lgossett@smalltownproperties.com

50 CR 401 - Oxford, MS 38655

smalltownproperties.com

Information is believed to be accurate but not guaranteed.