

**500.64± ACRE FARM**  
**COAHOMA/QUITMAN COUNTIES, MS**  
**\$3,700,000**



**SMALLTOWN**  
HUNTING PROPERTIES  
& REAL ESTATE<sup>SM</sup>

OFFICE (662) 846-1425



# THE COAHOMA/QUITMAN 500.64

## PROPERTY PROFILE

### LOCATION:

- Sunrise Road  
Jonestown, MS 38639
- Coahoma & Quitman Counties
- 12.8± Miles NE of Clarksdale
- 70± Miles S of Memphis

### COORDINATES:

- 34.26731, -90.43928

### PROPERTY USE:

- Agriculture
- Investment

### PROPERTY INFORMATION:

- 500.64± Tillable Acres
- Ag Land
- 3 Irrigation Wells
- Predominately Dubbs, Dundee,  
and Forrestdale Silty Loams
- Some Alligator Clay Soils

### TAX INFORMATION:

- 2023 - \$10,358.41



**SMALLTOWN**  
HUNTING PROPERTIES  
& REAL ESTATE<sup>SM</sup>

**FORD TRUE**

LAND SPECIALIST

C: 662-645-1119

O: 662-846-1425

[ford@smalltownproperties.com](mailto:ford@smalltownproperties.com)

701 W. Sunflower Rd - Cleveland, MS 38732

[smalltownproperties.com](http://smalltownproperties.com)

Information is believed to be accurate but not guaranteed.



# WELCOME TO THE COAHOMA/QUITMAN 500.64

**WELCOME TO THE COAHOMA/QUITMAN 500.64 - A PREMIER MISSISSIPPI DELTA AG FARM.** Soil type and irrigation are the driving factors that add value to agricultural land. This 500.64± acre farm, located in both Coahoma and Quitman counties, features premier soils and offers three irrigation wells. Dubbs Silty Loam, Dundee Silty Loam, and Forrestdale Silty Loam are the main soils you will find on the farm. These sandy soils are ideal for crops such as cotton and corn, and the farm has a proven yield history for both. Cotton averages three bales, and corn makes well over 200 bushels. The far southeast field on the farm is comprised of Alligator Clay and is well suited for grain crops like corn or soybeans.

Over the years, the natural topography of the farm has been manipulated by landforming, and is set up to row irrigate approximately 368 of the total 500.64 tillable acres.



**SMALLTOWN**  
HUNTING PROPERTIES  
& REAL ESTATE<sup>SM</sup>

**FORD TRUE**

LAND SPECIALIST

C: 662-645-1119

O: 662-846-1425

[ford@smalltownproperties.com](mailto:ford@smalltownproperties.com)

701 W. Sunflower Rd - Cleveland, MS 38732

[smalltownproperties.com](http://smalltownproperties.com)

Information is believed to be accurate but not guaranteed.



# MORE ABOUT THE COAHOMA/QUITMAN 500.64

For the investor or farmer looking to buy an income-producing asset that appreciates over time, farmland is a top choice! This tract fits the bill, whether a current farmer is looking to expand or an individual wants to invest and make a return on their money.

The rich soils of the Mississippi Delta have always been a wonderful, long-term investment, and this farm is no different. Top-notch soils, row irrigation, and great drainage make this tract a must-see; farms of this caliber are rare, so act fast!

**To schedule a private showing of this  
great farm, call Ford True today.**



**SMALLTOWN**  
HUNTING PROPERTIES  
& REAL ESTATE<sup>SM</sup>

**FORD TRUE**  
LAND SPECIALIST

C: 662-645-1119

O: 662-846-1425

[ford@smalltownproperties.com](mailto:ford@smalltownproperties.com)

701 W. Sunflower Rd - Cleveland, MS 38732

[smalltownproperties.com](http://smalltownproperties.com)

Information is believed to be accurate but not guaranteed.



500.64 ± ACRE FARM

COAHOMA/QUITMAN COUNTIES, MISSISSIPPI



# SMALLTOWN

HUNTING PROPERTIES  
& REAL ESTATE<sup>SM</sup>

**FORD TRUE**

LAND SPECIALIST

C: 662-645-1119

O: 662-846-1425

[ford@smalltownproperties.com](mailto:ford@smalltownproperties.com)

701 W. Sunflower Rd - Cleveland, MS 38732

[smalltownproperties.com](http://smalltownproperties.com)

Information is believed to be accurate but not guaranteed.



500.64 ± ACRE FARM

COAHOMA/QUITMAN COUNTIES, MISSISSIPPI



# SMALLTOWN

HUNTING PROPERTIES  
& REAL ESTATE<sup>SM</sup>

**FORD TRUE**

LAND SPECIALIST

C: 662-645-1119

O: 662-846-1425

[ford@smalltownproperties.com](mailto:ford@smalltownproperties.com)

701 W. Sunflower Rd - Cleveland, MS 38732

[smalltownproperties.com](http://smalltownproperties.com)

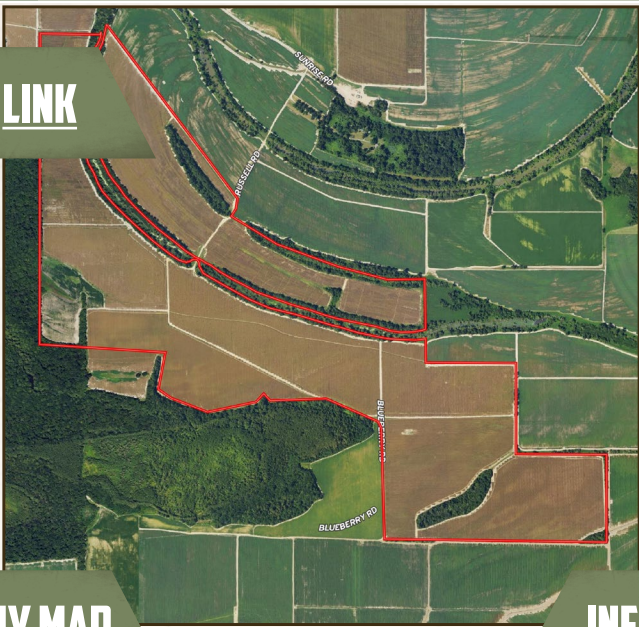
Information is believed to be accurate but not guaranteed.



500.64 ± ACRE FARM

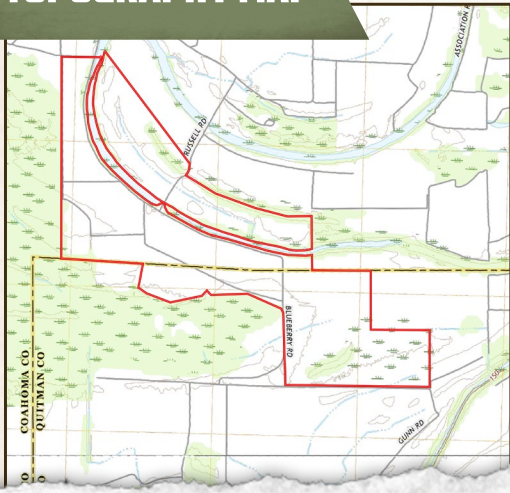
COAHOMA/QUITMAN COUNTIES, MISSISSIPPI

land id. LINK



TOPOGRAPHY MAP

INFRARED MAP



**SMALLTOWN**  
HUNTING PROPERTIES  
& REAL ESTATE<sup>SM</sup>

**FORD TRUE**

LAND SPECIALIST

C: 662-645-1119

O: 662-846-1425

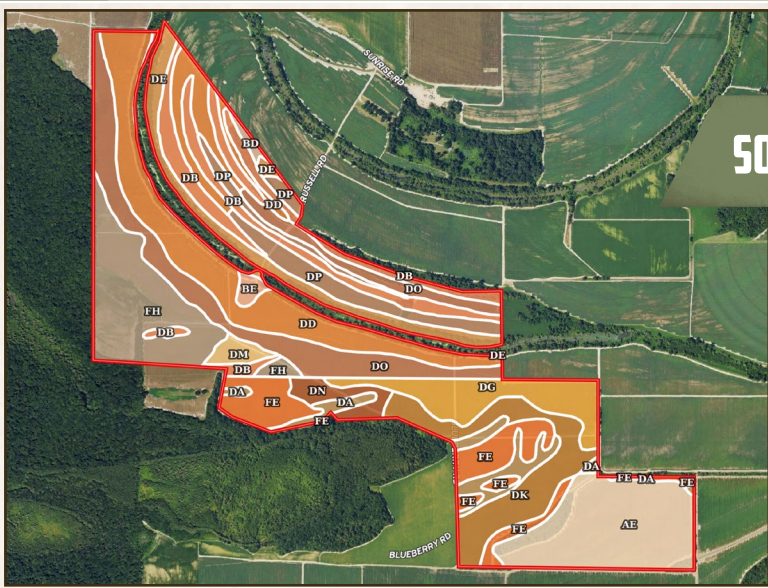
[ford@smalltownproperties.com](mailto:ford@smalltownproperties.com)

701 W. Sunflower Rd - Cleveland, MS 38732

[smalltownproperties.com](http://smalltownproperties.com)

Information is believed to be accurate but not guaranteed.

SOIL MAP



SOIL CODE	SOIL DESCRIPTION	ACRES	%	CPI	NCCPI	CAP
Dd	Dubbs very fine sandy loam, 0 to 3 percent slopes, rarely flooded	88.54	16.48	0	90	2e
Do	Dundee very fine sandy loam, 0 to 3 percent slopes, rarely flooded	65.26	12.14	0	88	2e
Ae	Alligator and Dowling clays (sharkey)	63.06	11.73	0	47	3e
Fh	Forestdale silty clay loam, 0.5 to 3 percent slopes	57.42	10.68	0	64	3w
Db	Dowling soils (sharkey)	50.75	9.44	0	52	4w
Dk	Dundee silt loam, 0 to 2 percent slopes, rarely flooded	41.89	7.79	0	88	2w
Fe	Forestdale silty clay loam, nearly level phase	39.28	7.31	0	64	3w
Dg	Dundee fine sandy loam, nearly level phase	32.82	6.11	0	85	2w
De	Dubbs very fine sandy loam, 3 to 7 percent slopes, moderately eroded, rarely flooded	30.83	5.74	0	85	4e
Dp	Dundee very fine sandy loam, 3 to 7 percent slopes, rarely flooded	28.56	5.31	0	87	4e
Da	Dowling clay and silty clay (sharkey)	18.17	3.38	0	40	5w
Dn	Dundee silty clay loam, 0 to 2 percent slopes, rarely flooded	10.14	1.89	0	85	2e
Dm	Dundee silty clay loam, 0.5 to 3 percent slopes	5.42	1.01	0	85	2w
Be	Teksob very fine sandy loam, 3 to 7 percent slopes, moderately eroded	3.21	0.6	0	57	4e
Bd	Bosket very fine sandy loam, 0 to 3 percent slopes (dubbs)	2.05	0.38	0	84	1



**SMALLTOWN**  
HUNTING PROPERTIES  
& REAL ESTATE<sup>SM</sup>

**FORD TRUE**  
LAND SPECIALIST  
C: 662-645-1119  
O: 662-846-1425

[ford@smalltownproperties.com](mailto:ford@smalltownproperties.com)

701 W. Sunflower Rd - Cleveland, MS 38732

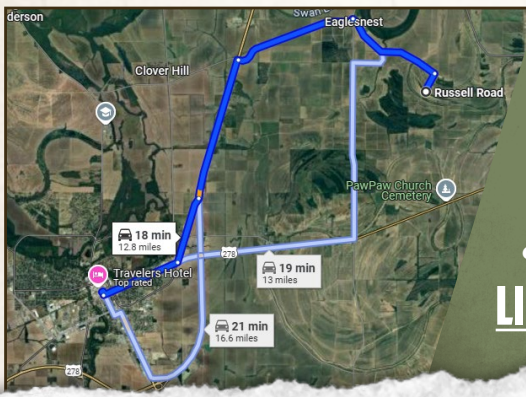
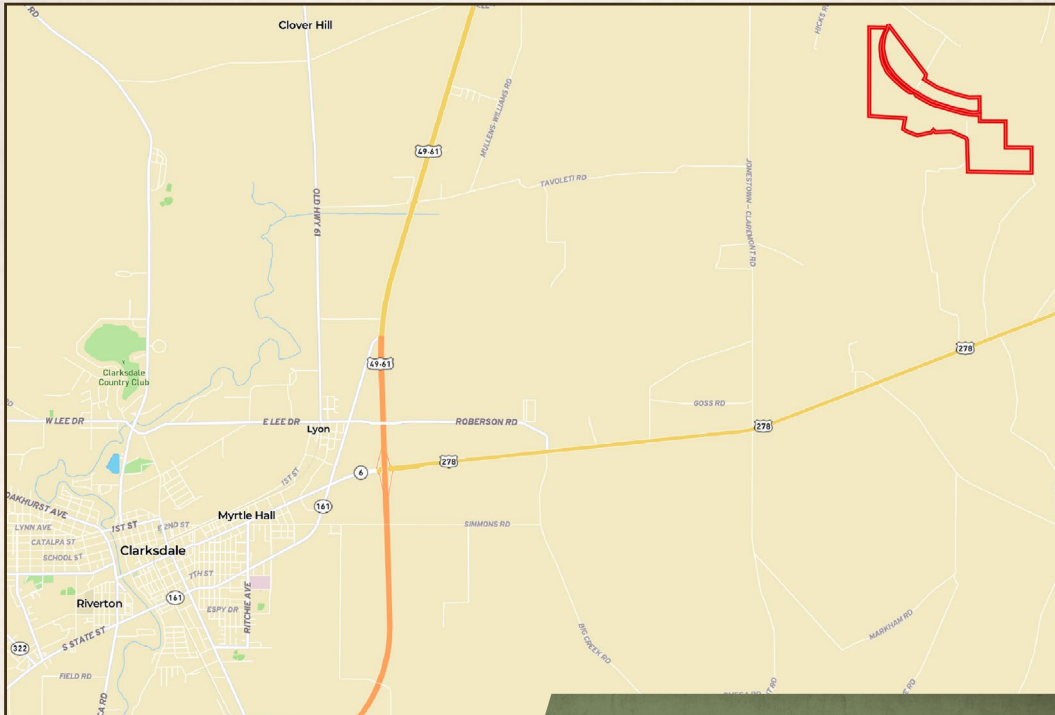
[smalltownproperties.com](http://smalltownproperties.com)

Information is believed to be accurate but not guaranteed.



500.64 ± ACRE FARM

COAHOMA/QUITMAN COUNTIES, MISSISSIPPI



Directions From the Intersection of Highway 61 and Highway 6 in Clarksdale, MS: Travel 3.5 miles east on Hwy 6 to Jonestown Claremont Road and turn left. Proceed north for 5 miles to Sunrise Road and turn right. In 2.3 miles, the property will be on the right side of the road.

**[LINK TO GOOGLE MAP DIRECTIONS](#)**



**SMALLTOWN**  
HUNTING PROPERTIES  
& REAL ESTATE<sup>SM</sup>

**FORD TRUE**  
LAND SPECIALIST  
C: 662-645-1119  
O: 662-846-1425

[ford@smalltownproperties.com](mailto:ford@smalltownproperties.com)

701 W. Sunflower Rd - Cleveland, MS 38732

[smalltownproperties.com](http://smalltownproperties.com)

*Information is believed to be accurate but not guaranteed.*