

DOOLITIC LIMESTONE MINE
180± ACRES | OWYHEE COUNTY, ID
\$500,000



SMALLTOWN
HUNTING PROPERTIES
& REAL ESTATESM

OFFICE (208) 505-9998

THE OOLITIC LIMESTONE MINE

PROPERTY PROFILE

LOCATION:

- Oreana, ID 83650
- Owyhee County
- 70± Minutes from the Ford Idaho Center
- 70± Minutes from Amalgamated Sugar in Nampa
- 75± Minutes from the Boise Airport

COORDINATES:

- 42.9776, -116.3575

PROPERTY USE:

- Lode Claim for CaCO₃ on Public Land

PROPERTY INFORMATION:

- 180± Acres



SMALLTOWN
HUNTING PROPERTIES
& REAL ESTATESM

F A R M | R A N C H

OSCAR EVANS, ALC

DESIGNATED BROKER

C: 208-258-0715

O: 208-505-9998

oscar@smalltownproperties.com

5700 E Franklin Rd, Ste 120 - Nampa, ID 83687

smalltownproperties.com

Information is believed to be accurate but not guaranteed.

WELCOME TO THE OOLITIC LIMESTONE MINE

INTRODUCING AN EXTREMELY RARE OPPORTUNITY TO ACQUIRE THE RIGHTS TO A CALCIUM CARBONATE (CACO₃) DEPOSIT NEAR OREANA, IDAHO IN OWYHEE COUNTY. Calcium Carbonate, Oolite in this deposit, has many uses in the agriculture, construction and manufacturing industries. This is a 180± acre open mine with a Lode Claim to the mineral deposit on BLM Public Land. The Operating Plan is current.

For further information contact Oscar Evans today.



SMALLTOWN
HUNTING PROPERTIES
& REAL ESTATESM

F A R M | R A N C H

OSCAR EVANS, ALC

DESIGNATED BROKER

C: 208-258-0715

O: 208-505-9998

oscar@smalltownproperties.com

5700 E Franklin Rd, Ste 120 - Nampa, ID 83687

smalltownproperties.com

Information is believed to be accurate but not guaranteed.

DOOLITIC LIMESTONE MINE

180± ACRES | DWYHEE COUNTY, IDAHO



SMALLTOWN
HUNTING PROPERTIES
& REAL ESTATESM

F A R M | R A N C H

OSCAR EVANS, ALC

DESIGNATED BROKER

C: 208-258-0715

O: 208-505-9998

oscar@smalltownproperties.com

5700 E Franklin Rd, Ste 120 - Nampa, ID 83687

smalltownproperties.com

Information is believed to be accurate but not guaranteed.

ODOLITIC LIMESTONE MINE

180± ACRES | DWYHEE COUNTY, IDAHO



SMALLTOWN
HUNTING PROPERTIES
& REAL ESTATESM

F A R M | R A N C H

OSCAR EVANS, ALC

DESIGNATED BROKER

C: 208-258-0715

O: 208-505-9998

oscar@smalltownproperties.com

5700 E Franklin Rd, Ste 120 - Nampa, ID 83687

smalltownproperties.com

Information is believed to be accurate but not guaranteed.

COMMON USES FOR CALCIUM CARBONATE (CaCO₃)

CONSTRUCTION INDUSTRY: Calcium carbonate is used as a building material in the construction industry. It is a key ingredient in the manufacturing of cement, mortar, and concrete.

PAPER INDUSTRY: In the paper industry, calcium carbonate is used as a filler material to improve the brightness, opacity, and smoothness of paper. It is also used as a coating pigment in glossy papers.

PLASTICS INDUSTRY: Calcium carbonate is used as a filler in plastics to increase product volume, reduce costs, and improve mechanical properties. It is commonly used in the production of PVC, rubber, and thermosetting plastics.

PAINTS AND COATINGS: Calcium carbonate is used as a pigment in paints, coatings, and primers to provide opacity, brightness, and coverage. It also acts as an extender to reduce the amount of expensive binders in the formulation.

ENVIRONMENTAL APPLICATIONS: Calcium carbonate is used in environmental applications such as flue gas desulfurization (FGD) to reduce sulfur dioxide emissions from power plants. It is also used in water treatment to adjust pH levels and remove impurities.

AGRICULTURAL INDUSTRY: Calcium carbonate is used as a soil conditioner to neutralize acidic soils and provide essential calcium for plant growth. It is also used as a feed additive for livestock to support bone development.

PERSONAL CARE PRODUCTS: Calcium carbonate is used in personal care products such as toothpaste, skincare products, and cosmetics as an abrasive, opacifying agent, and pH regulator.

**These are just a few examples of the many applications of calcium carbonate in various industries. Its abundance, low cost, and versatile properties make it a widely used compound in manufacturing and production processes.*



SMALLTOWN
HUNTING PROPERTIES
& REAL ESTATESM

F A R M | R A N C H

OSCAR EVANS, ALC

DESIGNATED BROKER

C: 208-258-0715

O: 208-505-9998

oscar@smalltownproperties.com

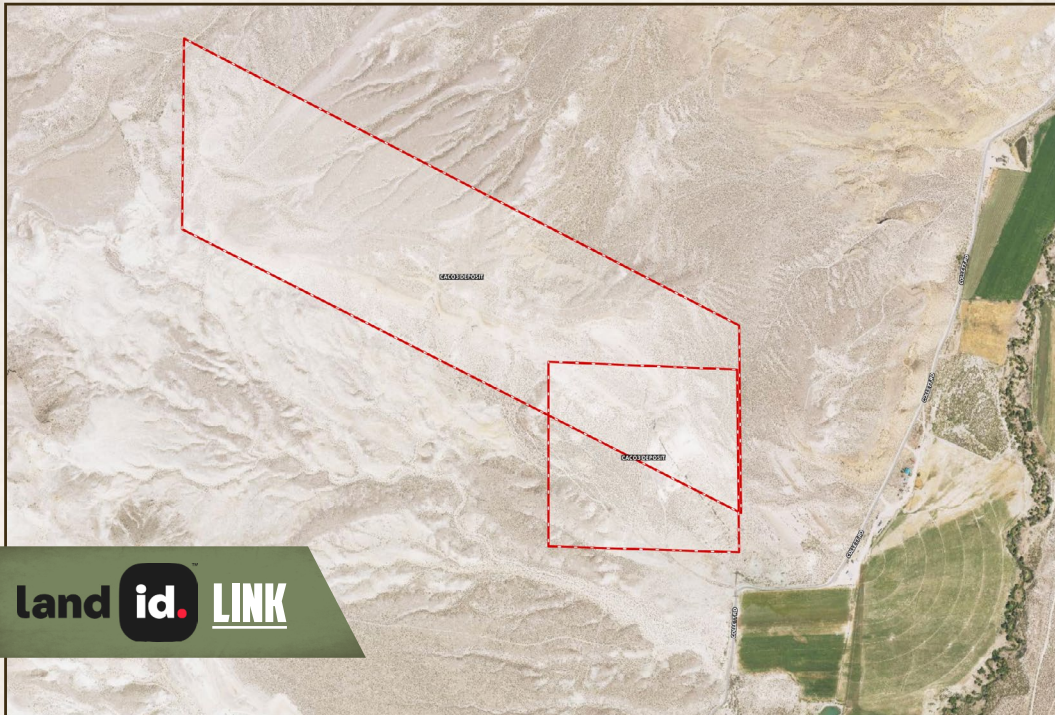
5700 E Franklin Rd, Ste 120 - Nampa, ID 83687

smalltownproperties.com

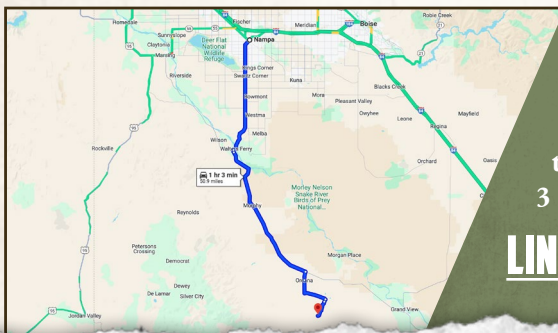
Information is believed to be accurate but not guaranteed.

DOOLITIC LIMESTONE MINE

180± ACRES | OWYHEE COUNTY, IDAHO



land id. LINK



Directions From Nampa, Idaho:
Travel ID 45 South to ID 78 to
Oreana Loop Road and continue south
to Collett Road. Proceed approximately
3 miles.

[LINK TO GOOGLE MAP DIRECTIONS](#)



SMALLTOWN
HUNTING PROPERTIES
& REAL ESTATESM

F A R M | R A N C H

OSCAR EVANS, ALC
DESIGNATED BROKER

C: 208-258-0715

O: 208-505-9998

oscar@smalltownproperties.com

5700 E Franklin Rd, Ste 120 - Nampa, ID 83687

smalltownproperties.com

Information is believed to be accurate but not guaranteed.