



**SMALLTOWN**  
HUNTING PROPERTIES  
& REAL ESTATE<sup>SM</sup>

**202.43± ACRES**  
**ATTALA COUNTY, MS**  
**\$485,000**



OFFICE (769) 888-2522 | [WWW.SMALLTOWNPROPERTIES.COM](http://WWW.SMALLTOWNPROPERTIES.COM)

# THE ATTALA 202.43

## PROPERTY PROFILE

### LOCATION:

- Attala Road 4110  
Sallis, MS 39160
- Attala County
- 13± Miles W of Kosciusko
- 55± Miles N of Madison

### COORDINATES:

- 33.02276, - 89.77639

### PROPERTY USE:

- Farming
- Hunting
- Home/Cabin Sites

### PROPERTY INFORMATION:

- 202.43± Surveyed Acres
- 85± Acres of Dry Farm Ground
- County Road Frontage
- Mixed Woodlands
- Frontage on Long Creek
- Utilities Nearby

### TAX INFORMATION:

- TBD for 2024



**SMALLTOWN**  
HUNTING PROPERTIES  
& REAL ESTATE<sup>SM</sup>

**ADAM HESTER, ALC**

ASSOCIATE BROKER

C: 601-506-5058

O: 769-888-2522

[adam@smalltownproperties.com](mailto:adam@smalltownproperties.com)

4848 Main St. - Flora, MS 39071

[smalltownproperties.com](http://smalltownproperties.com)

/16,000+ Followers

Information is believed to be accurate but not guaranteed.



# WELCOME TO THE ATTALA 202.43

**WELCOME TO THE ATTALA 202.43, SITUATED NEAR THE COMMUNITY OF SALLIS, MS.** This Attala County property offers an exceptional combination of accessibility, versatility, and potential for a wide range of uses. The 202.43± surveyed acre tract offers frontage on paved Attala County Road 4110, which provides convenient access while preserving the rural atmosphere that defines the area.

Approximately 85 acres of dry crop ground makes up a portion of the land and is ideal for continued farming or leasing. The remaining balance consists of a natural woodland mixture and areas of natural regeneration. Adding to its appeal, Long Creek navigates along the southern border, adding to the diverse landscape.



**SMALLTOWN**  
HUNTING PROPERTIES  
& REAL ESTATE<sup>SM</sup>

**ADAM HESTER, ALC**

ASSOCIATE BROKER


C: 601-506-5058

O: 769-888-2522

[adam@smalltownproperties.com](mailto:adam@smalltownproperties.com)

4848 Main St. - Flora, MS 39071

[smalltownproperties.com](http://smalltownproperties.com)

 16,000+ Followers

Information is believed to be accurate but not guaranteed.



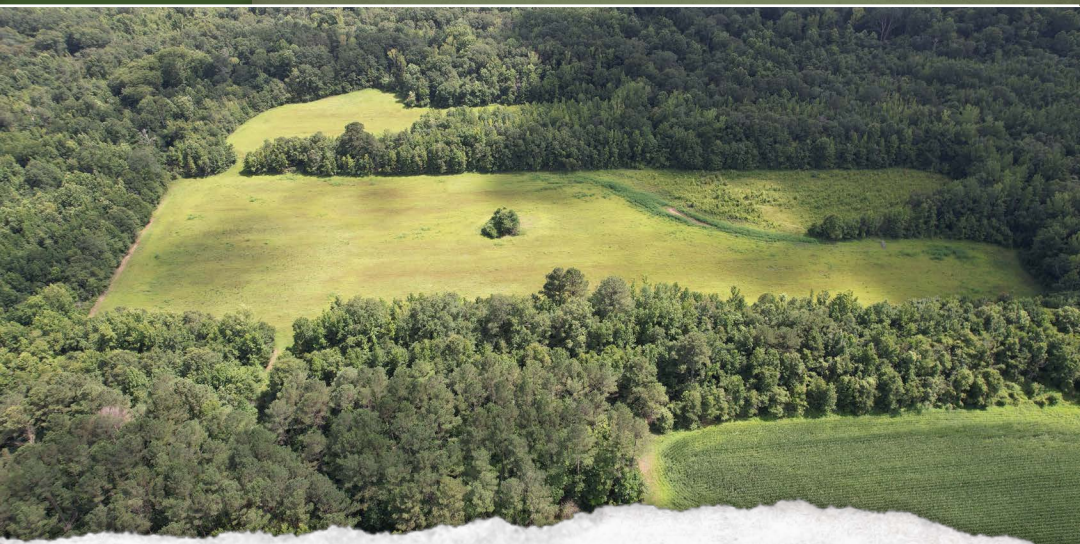
# MORE ABOUT THE ATTALA 202.43

Whether your focus is on income production or recreational opportunities, the Attala 202.43 is a property that can meet your needs. Income options can be found through ongoing crop production or possible enrollment in government programs. For those with a vision for wildlife and habitat development, the property provides a blank canvas to craft a haven for deer, turkey, and other small game. Known for strong wildlife populations, this area, coupled with Long Creek as a reliable water source, is perfect for creating a dynamic and thriving hunting property.

Several potential cabin sites are along the road, and utilities can be found nearby. The property is located approximately 13 miles west of Kosciusko and roughly 55 miles north of Madison, making it easily accessible to supplies and amenities.

Whether you're seeking an income-producing farm, a recreational retreat, or a conservation project, the Attala 202.43 offers endless possibilities.

**Contact Adam Hester for more  
information and to schedule a viewing.**



**SMALLTOWN**  
HUNTING PROPERTIES  
& REAL ESTATE<sup>SM</sup>

**ADAM HESTER, ALC**

ASSOCIATE BROKER


C: 601-506-5058

O: 769-888-2522

[adam@smalltownproperties.com](mailto:adam@smalltownproperties.com)

4848 Main St. - Flora, MS 39071

[smalltownproperties.com](http://smalltownproperties.com)

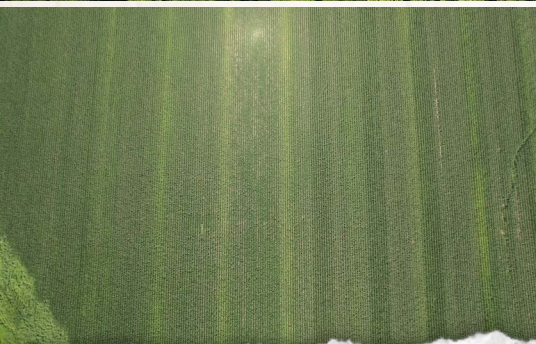
 16,000+ Followers

Information is believed to be accurate but not guaranteed.



202.43 ± ACRES

ATTALA COUNTY, MISSISSIPPI



**SMALLTOWN**  
HUNTING PROPERTIES  
& REAL ESTATE<sup>SM</sup>

**ADAM HESTER, ALC**

ASSOCIATE BROKER


C: 601-506-5058

O: 769-888-2522

[adam@smalltownproperties.com](mailto:adam@smalltownproperties.com)

4848 Main St. - Flora, MS 39071

[smalltownproperties.com](http://smalltownproperties.com)

 16,000+ Followers

Information is believed to be accurate but not guaranteed.



202.43 ± ACRES

ATTALA COUNTY, MISSISSIPPI



**SMALLTOWN**  
HUNTING PROPERTIES  
& REAL ESTATE<sup>SM</sup>

**ADAM HESTER, ALC**

ASSOCIATE BROKER


C: 601-506-5058

O: 769-888-2522

[adam@smalltownproperties.com](mailto:adam@smalltownproperties.com)

4848 Main St. - Flora, MS 39071

[smalltownproperties.com](http://smalltownproperties.com)

 16,000+ Followers

Information is believed to be accurate but not guaranteed.



202.43 ± ACRES

ATTALA COUNTY, MISSISSIPPI



**SMALLTOWN**  
HUNTING PROPERTIES  
& REAL ESTATE<sup>SM</sup>

**ADAM HESTER, ALC**

ASSOCIATE BROKER


C: 601-506-5058

O: 769-888-2522

[adam@smalltownproperties.com](mailto:adam@smalltownproperties.com)

4848 Main St. - Flora, MS 39071

[smalltownproperties.com](http://smalltownproperties.com)

 16,000+ Followers

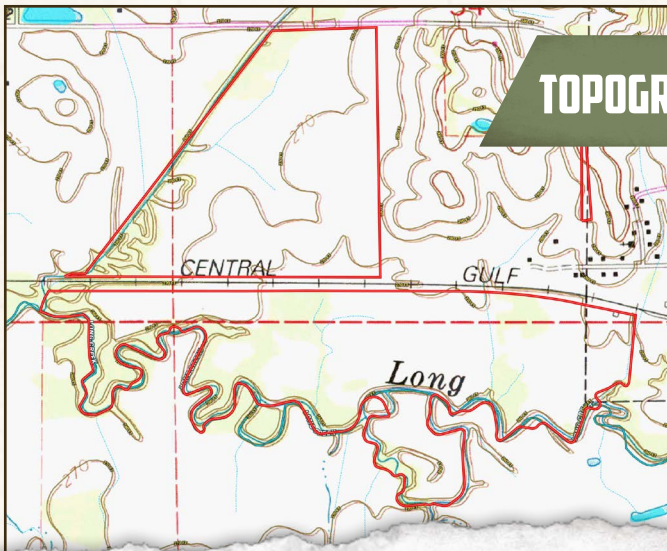
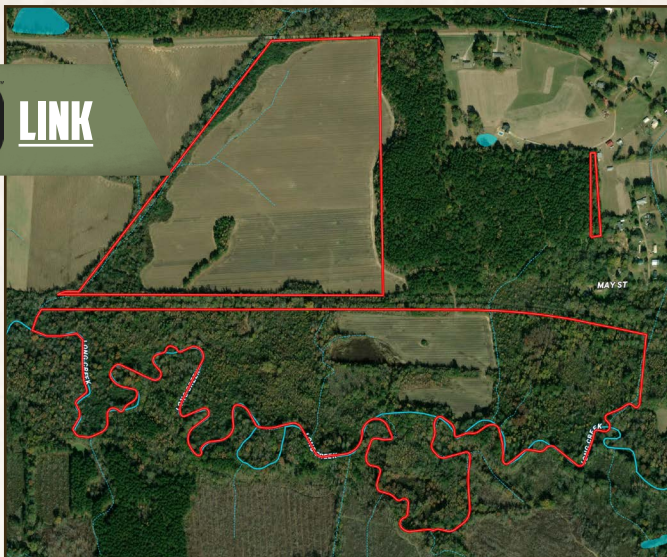
Information is believed to be accurate but not guaranteed.



202.43 ± ACRES

ATTALA COUNTY, MISSISSIPPI

land id. LINK



TOPOGRAPHY MAP



**SMALLTOWN**  
HUNTING PROPERTIES  
& REAL ESTATE<sup>SM</sup>

**ADAM HESTER, ALC**

ASSOCIATE BROKER

C: 601-506-5058

O: 769-888-2522

[adam@smalltownproperties.com](mailto:adam@smalltownproperties.com)

4848 Main St. - Flora, MS 39071

[smalltownproperties.com](http://smalltownproperties.com)

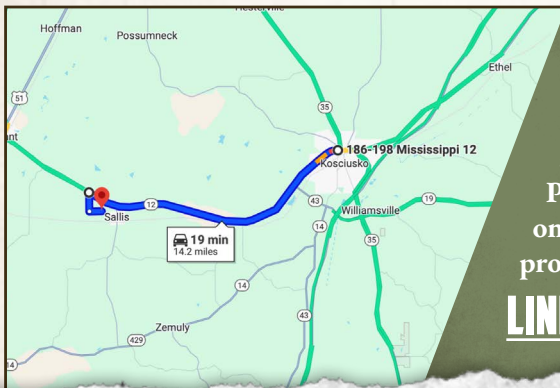
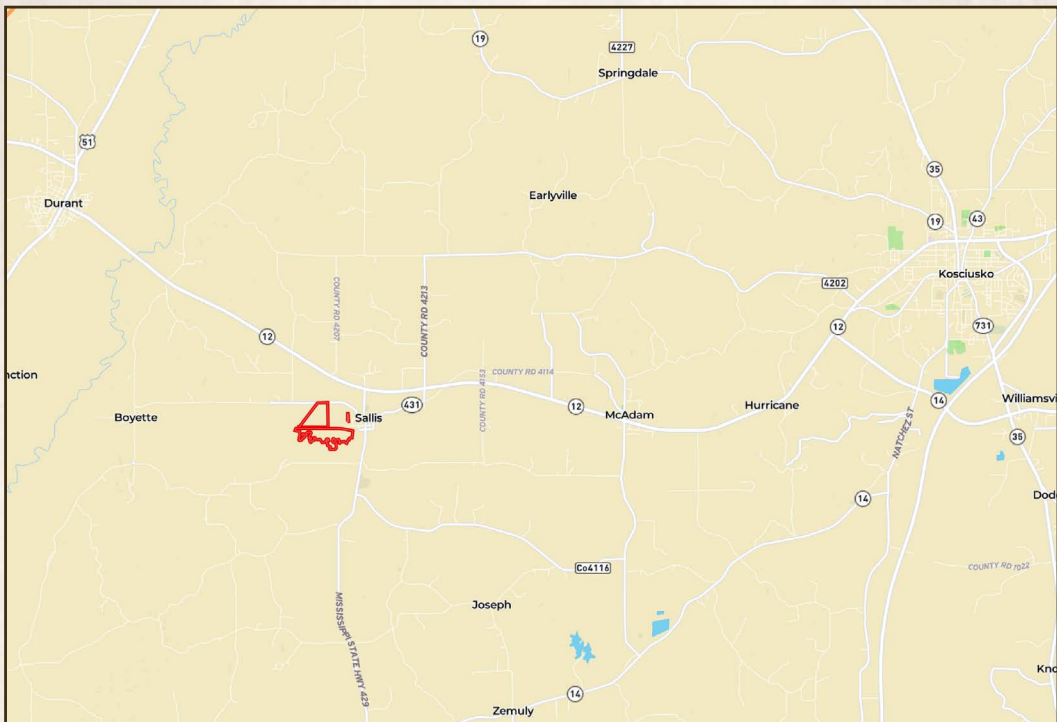
f/16,000+ Followers

Information is believed to be accurate but not guaranteed.



202.43 ± ACRES

ATTALA COUNTY, MISSISSIPPI



Directions From the Intersection of MS-12 and MS-35 in Kosciusko, MS: Drive 12.8 miles west on MS-12 and turn left onto Attala Road 4121. Proceed for 0.9 miles and turn left onto Attala Road 4110. In 0.6 miles, the property will be on your right

**[LINK TO GOOGLE MAP DIRECTIONS](#)**



**SMALLTOWN**  
HUNTING PROPERTIES  
& REAL ESTATE<sup>SM</sup>

**ADAM HESTER, ALC**

ASSOCIATE BROKER

C: 601-506-5058

O: 769-888-2522

[adam@smalltownproperties.com](mailto:adam@smalltownproperties.com)

4848 Main St. - Flora, MS 39071

[smalltownproperties.com](http://smalltownproperties.com)

16,000+ Followers

Information is believed to be accurate but not guaranteed.