

119.25± ACRES
HINDS COUNTY, MS
\$497,000



SMALLTOWN
HUNTING PROPERTIES
& REAL ESTATESM

OFFICE (769) 888-2522 | WWW.SMALLTOWNPROPERTIES.COM

THE HINDS 119.25

PROPERTY PROFILE

LOCATION:

- Traxler Road
Utica, MS 39175
- Hinds County
- 46.5± Miles S of Madison
- 171± Miles N of Baton Rouge

COORDINATES:

- 32.06, -90.6292

PROPERTY USE:

- Recreational
- Hunting
- Investment
- Home Place

PROPERTY INFORMATION:

- 119.25± Total Acres
- 10± Acre Pasture
- 3,115± Frontage Feet on White Oak Creek
- 2,759± Feet of Paved Road Frontage
- Gum/Hardwood Trees
- Interior Roads
- Power Line
- Power and Water Available

TAX INFORMATION:

2023 - \$835.21

- Parcel # - 4964-0021-001



SMALLTOWN
HUNTING PROPERTIES
& REAL ESTATESM

LUKE SANDERS

LAND SPECIALIST

C: 601-953-3535

O: 769-888-2522

luke@smalltownproperties.com

4848 Main St. - Flora, MS 39071

smalltownproperties.com

Information is believed to be accurate but not guaranteed.

WELCOME TO THE HINDS 119.25

IF YOU HAVE BEEN LOOKING FOR AN AWESOME YEAR-ROUND RECREATIONAL TRACT THAT THE WHOLE FAMILY CAN ENJOY, MAKE SURE TO VISIT THE HINDS 119.25. Situated in the southwest corner of Hinds County, approximately three miles south of Utica, is a 119.25± acre property. The Hinds County tract is in a desirable location known for its deer hunting!

As you turn off Traxler Road, you will find a hard gravel-based road running through 10± acres of pasture and into the property to a potential campsite sitting on the bank of White Oak Creek. Power and water are already set up, provided by Southwest EPA and Reed Town Water Association. This is one less thing you need to worry about! This timber makeup mainly consists of gum and hardwood trees with occasional pines throughout. In the northwest corner of the property, there is another small creek that comes from under Traxler Road and goes back into White Oak Creek. One of the best parts about this property is the seasonal diversity it offers. In the winter months, bring the family to enjoy the great deer hunting that this area provides. During the summer, cool off in the creek!

To explore the Hinds 119.25, call Luke Sanders today and schedule a private tour!



SMALLTOWN
HUNTING PROPERTIES
& REAL ESTATESM

LUKE SANDERS

LAND SPECIALIST

C: 601-953-3535

O: 769-888-2522

luke@smalltownproperties.com

4848 Main St. - Flora, MS 39071

smalltownproperties.com

Information is believed to be accurate but not guaranteed.

119.25 ± ACRES

HINDS COUNTY, MISSISSIPPI



SMALLTOWN
HUNTING PROPERTIES
& REAL ESTATESM

LUKE SANDERS

LAND SPECIALIST

C: 601-953-3535

O: 769-888-2522

luke@smalltownproperties.com

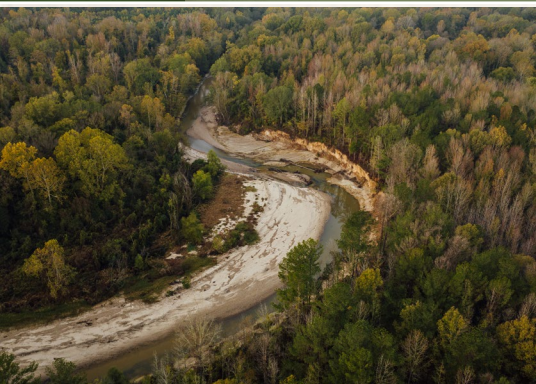
4848 Main St. - Flora, MS 39071

smalltownproperties.com

Information is believed to be accurate but not guaranteed.

119.25 ± ACRES

HINDS COUNTY, MISSISSIPPI



SMALLTOWN
HUNTING PROPERTIES
& REAL ESTATESM

LUKE SANDERS

LAND SPECIALIST

C: 601-953-3535

O: 769-888-2522

luke@smalltownproperties.com

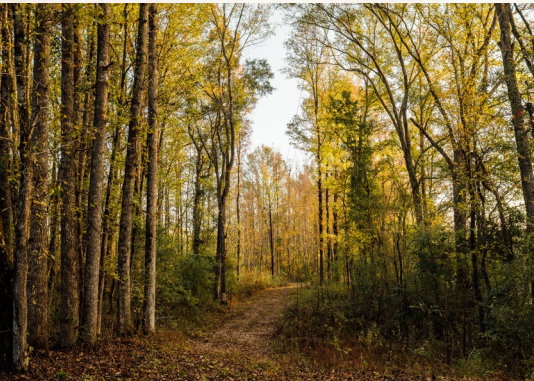
4848 Main St. - Flora, MS 39071

smalltownproperties.com

Information is believed to be accurate but not guaranteed.

119.25 ± ACRES

HINDS COUNTY, MISSISSIPPI



SMALLTOWN
HUNTING PROPERTIES
& REAL ESTATESM

LUKE SANDERS

LAND SPECIALIST

C: 601-953-3535

O: 769-888-2522

luke@smalltownproperties.com

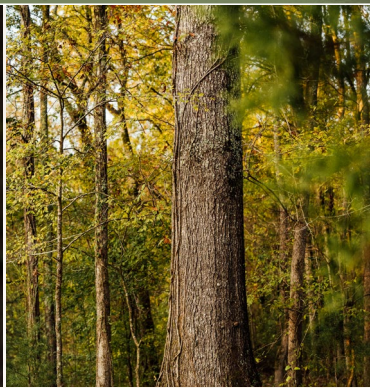
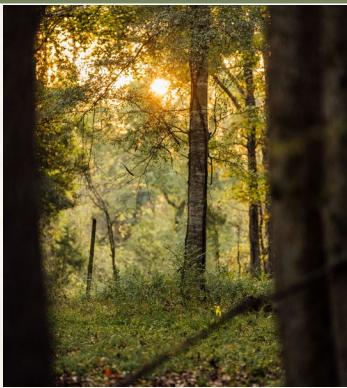
4848 Main St. - Flora, MS 39071

smalltownproperties.com

Information is believed to be accurate but not guaranteed.

119.25 ± ACRES

HINDS COUNTY, MISSISSIPPI



SMALLTOWN

HUNTING PROPERTIES
& REAL ESTATESM

LUKE SANDERS

LAND SPECIALIST

C: 601-953-3535

O: 769-888-2522

luke@smalltownproperties.com

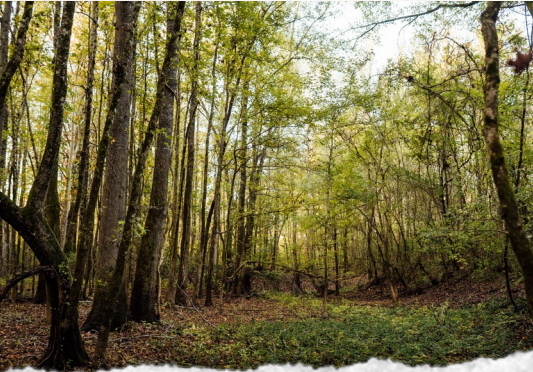
4848 Main St. - Flora, MS 39071

smalltownproperties.com

Information is believed to be accurate but not guaranteed.

119.25 ± ACRES

HINDS COUNTY, MISSISSIPPI



SMALLTOWN
HUNTING PROPERTIES
& REAL ESTATESM

LUKE SANDERS

LAND SPECIALIST

C: 601-953-3535

O: 769-888-2522

luke@smalltownproperties.com

4848 Main St. - Flora, MS 39071

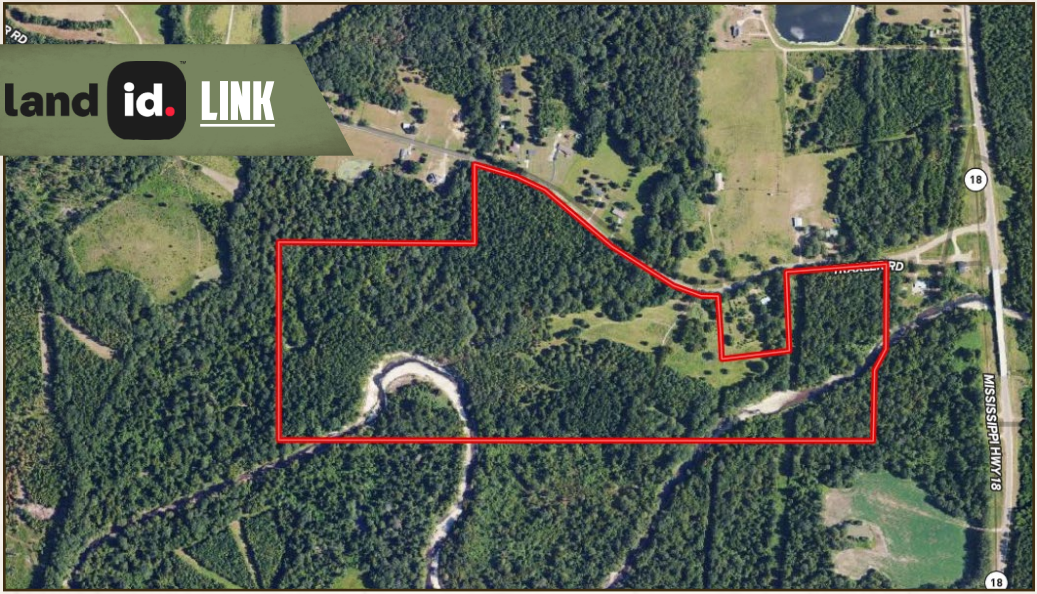
smalltownproperties.com

Information is believed to be accurate but not guaranteed.

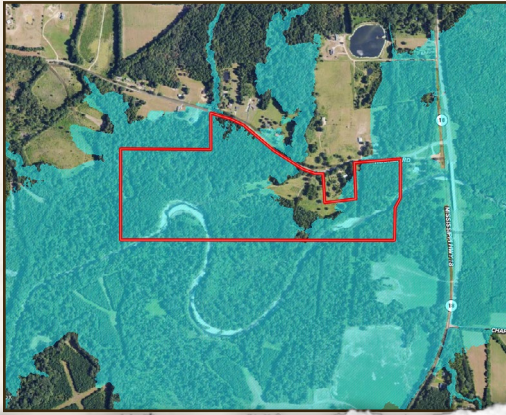
119.25 ± ACRES

HINDS COUNTY, MISSISSIPPI

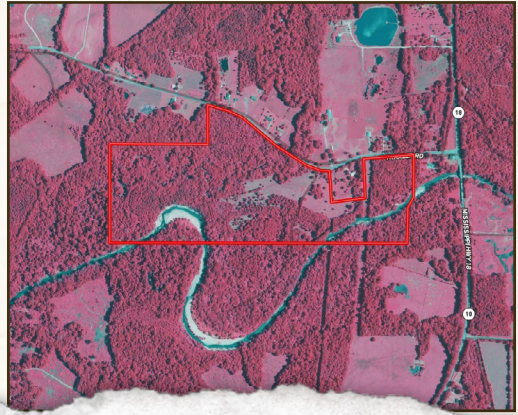
land id. LINK



FLOOD MAP



INFRARED MAP



SMALLTOWN
HUNTING PROPERTIES
& REAL ESTATESM

LUKE SANDERS

LAND SPECIALIST

C: 601-953-3535

O: 769-888-2522

luke@smalltownproperties.com

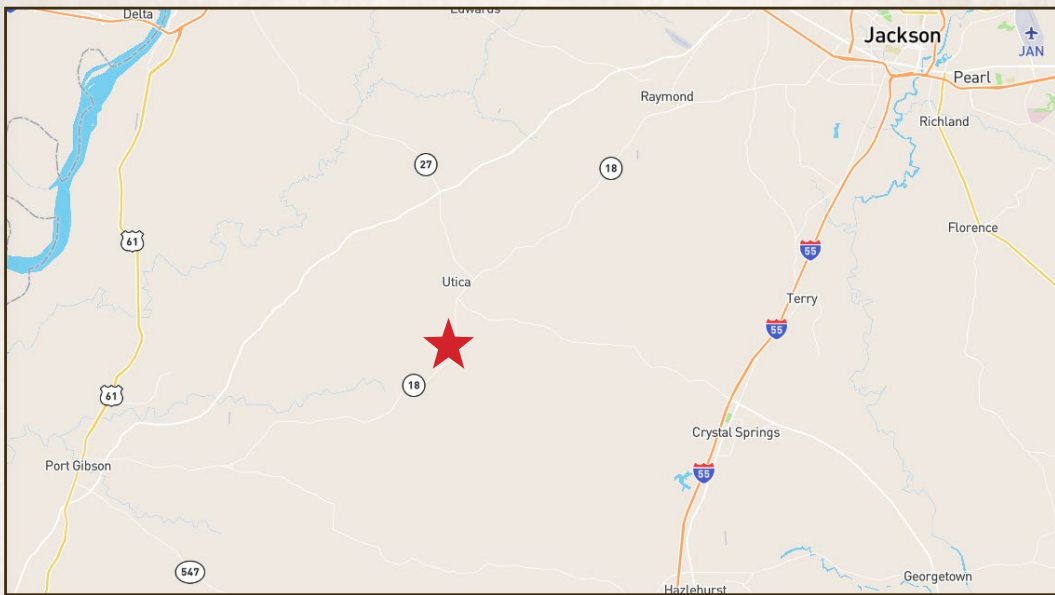
4848 Main St. - Flora, MS 39071

smalltownproperties.com

Information is believed to be accurate but not guaranteed.

119.25 ± ACRES

HINDS COUNTY, MISSISSIPPI



Directions From I-55 in Madison, MS: Travel I-55 south and merge onto I-220 S. Continue 11 miles and merge onto I-20 W towards Vicksburg. Continue 1.2 miles and take exit #40A to merge onto MS-18 W towards Raymond. Proceed 29.1 miles and turn right onto Traxler Road. In 0.6 miles, the destination will be on your left.

Directions From I-10 in Baton Rouge, LA: Travel 0.5 miles south on I-110 and merge onto I-10 E towards New Orleans. Continue 4.2 miles and keep left following the signs for Hammond. In 38.3 miles take exit #38B to merge onto I-55 north towards Jackson. Proceed 108 miles to exit #72 for MS-27 N towards Utica. Drive 17.4 miles and turn left onto Highway 18. In 2.3 miles turn right onto Traxler Road. Drive 0.6 miles and the destination will be on your left.

[LINK TO GOOGLE MAP DIRECTIONS](#)



SMALLTOWN
HUNTING PROPERTIES
& REAL ESTATESM

LUKE SANDERS

LAND SPECIALIST

C: 601-953-3535

O: 769-888-2522

luke@smalltownproperties.com

4848 Main St. - Flora, MS 39071

smalltownproperties.com

Information is believed to be accurate but not guaranteed.