

19± ACRES
JASPER COUNTY, MS
\$75,000



SMALLTOWN

HUNTING PROPERTIES
& REAL ESTATESM

OFFICE (769) 760-0005

THE JASPER 19

PROPERTY PROFILE

LOCATION:

- Hwy 15N
Louin, MS 39338
- Jasper County
- 3.5± Miles N of Bay Springs

COORDINATES:

- 32.024596, -89.278956

PROPERTY USE:

- Hunting
- Family Getaway
- Outdoor Lifestyle
- Residential

PROPERTY INFORMATION:

- 19± Acres
- State Hwy Frontage
- Rolling Terrain
- Mature Hardwood and Pine
- Pond
- Utilities
- Deer & Duck

TAX INFORMATION:

2024 - \$53.95

- Parcel 0083-09-000-023.01



SMALLTOWN
HUNTING PROPERTIES
& REAL ESTATESM

DENNIS WEST

EAST MISSISSIPPI MANAGING BROKER

ALABAMA QUALIFYING BROKER

LOUISIANA ASSOCIATE BROKER

C: 601-248-4396 | O: 769-760-0005

dennis@smalltownproperties.com

2121 5th St., Ste 206 - Meridian, MS 39301

smalltownproperties.com

WELCOME TO THE JASPER 19

IF YOU ARE IN THE MARKET FOR A PROPERTY OFFERING HUNTING, RECREATION, OR A COUNTRY GETAWAY, LOOK NO FURTHER! This 19± acre Jasper County tract is situated just over three miles north of Bay Springs with frontage on Highway 15. Adding to its natural beauty, other features include rolling terrain, a mix of mature hardwoods, and a small stream meandering through the landscape. A pond provides a scenic touch and a potential water source for local wildlife. The property is split by a railroad, which creates a unique layout for exploration and outdoor enjoyment. Whether you're looking for a hunting retreat, a recreational escape, or a potential home or cabin site, this property has much to offer! For added convenience, utilities are nearby.

**Call Dennis West today to discuss the options
available on this Jasper County gem!**



SMALLTOWN
HUNTING PROPERTIES
& REAL ESTATESM

DENNIS WEST

EAST MISSISSIPPI MANAGING BROKER

ALABAMA QUALIFYING BROKER

LOUISIANA ASSOCIATE BROKER

C: 601-248-4396 | O: 769-760-0005

dennis@smalltownproperties.com

2121 5th St., Ste 206 - Meridian, MS 39301

smalltownproperties.com

19± ACRES

JASPER COUNTY, MISSISSIPPI



SMALLTOWN
HUNTING PROPERTIES
& REAL ESTATESM

DENNIS WEST

EAST MISSISSIPPI MANAGING BROKER

ALABAMA QUALIFYING BROKER

LOUISIANA ASSOCIATE BROKER

C: 601-248-4396 | O: 769-760-0005

dennis@smalltownproperties.com

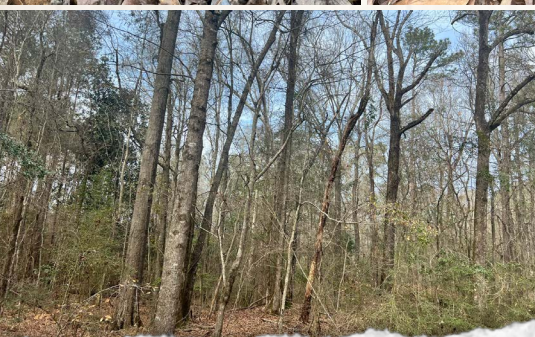
2121 5th St., Ste 206 - Meridian, MS 39301

smalltownproperties.com

Information is believed to be accurate but not guaranteed.

19± ACRES

JASPER COUNTY, MISSISSIPPI



SMALLTOWN
HUNTING PROPERTIES
& REAL ESTATESM

DENNIS WEST

EAST MISSISSIPPI MANAGING BROKER

ALABAMA QUALIFYING BROKER

LOUISIANA ASSOCIATE BROKER

C: 601-248-4396 | O: 769-760-0005

dennis@smalltownproperties.com

2121 5th St., Ste 206 - Meridian, MS 39301

smalltownproperties.com

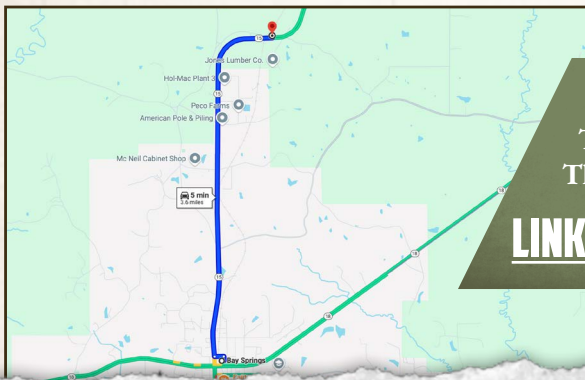
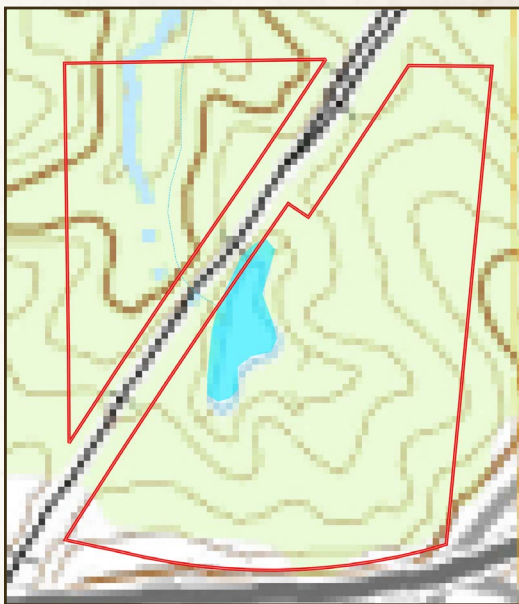
Information is believed to be accurate but not guaranteed.

19± ACRES

JASPER COUNTY, MISSISSIPPI

land **id.** LINK

TOPOGRAPHY MAP



Directions From Bay Spring, MS:
Travel 3.5 miles north on Hwy 15.
The property will be on the left.

[LINK TO GOOGLE MAP DIRECTIONS](#)



SMALLTOWN
HUNTING PROPERTIES
& REAL ESTATESM

DENNIS WEST

EAST MISSISSIPPI MANAGING BROKER

ALABAMA QUALIFYING BROKER

LOUISIANA ASSOCIATE BROKER

C: 601-248-4396 | O: 769-760-0005

dennis@smalltownproperties.com

2121 5th St., Ste 206 - Meridian, MS 39301

smalltownproperties.com

Information is believed to be accurate but not guaranteed.