

VACANT LOT | CORNER OF WEISS & BERT
POLK COUNTY, AR
\$16,500



SMALLTOWN
HUNTING PROPERTIES
& REAL ESTATESM

OFFICE (479) 588-1034 | WWW.SMALLTOWNPROPERTIES.COM

VACANT LOT CORNER OF WEISS & BERT

PROPERTY PROFILE

LOCATION:

- Corner of Bert St. & Weiss St.
- Wissman's Subdivision
- Mena, AR 71953
- Polk County
- 1.2± Miles to the Base of The Talimina Scenic Drive & The Mena Bike Trails Project
- 2± Miles to Mena Regional Health System Hospital
- 79± Miles to Lake Ouachita
- 87± Miles to Fort Smith, AR (Closest Airport)
- 89± Miles to Hot Springs, AR (Oaklawn/Shopping)

COORDINATES:

- 34.57674, -94.2431

TAX INFORMATION:

- Parcel 6000-02062-0000: \$79

PROPERTY USE:

- Residential – New Construction
- Investment
- Basecamp to the Bike Trails

PROPERTY INFORMATION:

- Corner Lot
- Paved Access
- Multiple points of entry
- 0.34± Acres
- City Utilities Available
- Established Neighborhood
- Large Hardwood Trees
- [Click Here](#) to View Mena Bike Trails Project Information



LUKE ALSTON | EXECUTIVE BROKER
C: 479-234-1376 | lukealston@smalltownproperties.com



DEEDEE ALSTON | PRINCIPAL BROKER
C: 479-243-6525 | deedee@smalltownproperties.com

WELCOME TO THE VACANT LOT ON THE CORNER OF WEISS & BERT

THIS VACANT RESIDENTIAL LOT IS SITUATED ON THE CORNERS OF WEISS AND BERT STREETS IN THE WISSMANS SUBDIVISION IN MENA, ARKANSAS. The level 0.34± acre lot is in an established neighborhood and ready for your new build. The level lot can be accessed from two paved streets and provides a blank slate of opportunity to situate your new home with possibilities of different views and numerous home design options. City utilities are all available.

Enjoy in-town living with the city park, shopping, groceries, coffee, restaurants, schools, and the Mena Arts District all within minutes. Plus, if you want easy rideable access to the new bike trails and the existing hiking trails that wind towards Queen Wilhelmina State Park and Lodge, this homesite is just over one mile away. The Trails at Mena Project is a new bike trails collaboration between Arkansas State Parks, Arkansas Parks and Recreation Foundation, the U.S. Forest Service, and the City of Mena.

For more information, contact Deedee or Luke Alston today!

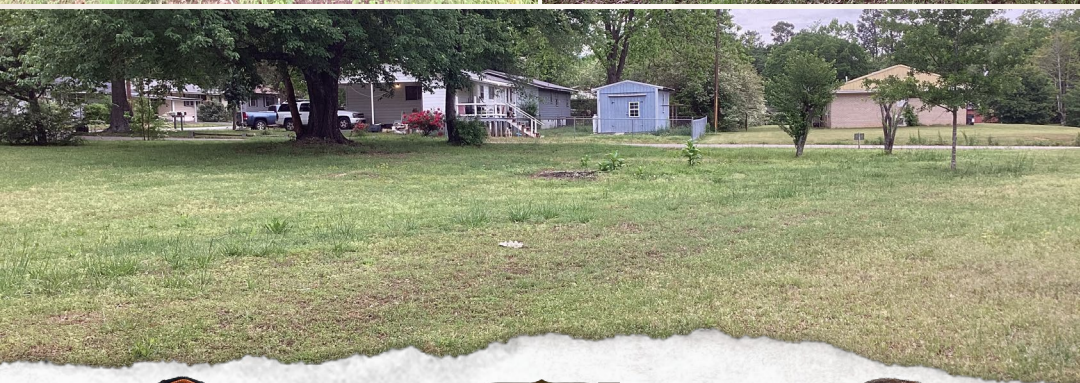


LUKE ALSTON | EXECUTIVE BROKER
C: 479-234-1376 | lukealston@smalltownproperties.com

DEEDEE ALSTON | PRINCIPAL BROKER
C: 479-243-6525 | deedee@smalltownproperties.com

5607 Hwy 71 South - Cove, AR 71937 | O: 479-588-1034 | smalltownproperties.com

Information is believed to be accurate but not guaranteed.



LUKE ALSTON | EXECUTIVE BROKER
C: 479-234-1376 | lukealston@smalltownproperties.com

DEEDEE ALSTON | PRINCIPAL BROKER
C: 479-243-6525 | deedee@smalltownproperties.com

5607 Hwy 71 South - Cove, AR 71937 | O: 479-588-1034 | smalltownproperties.com

Information is believed to be accurate but not guaranteed.

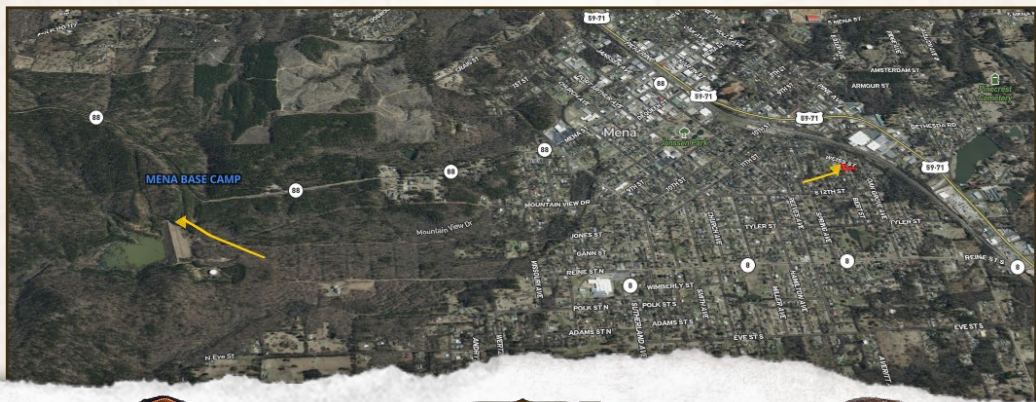
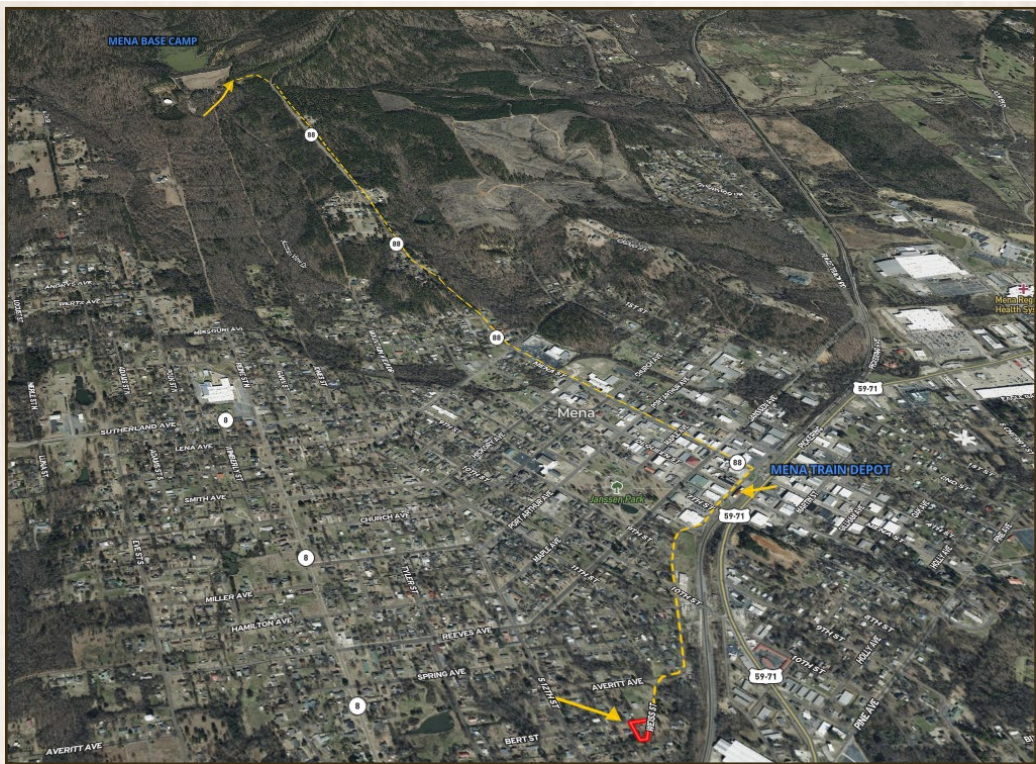


LUKE ALSTON | EXECUTIVE BROKER
C: 479-234-1376 | lukealston@smalltownproperties.com

DEEDEE ALSTON | PRINCIPAL BROKER
C: 479-243-6525 | deedee@smalltownproperties.com

5607 Hwy 71 South - Cove, AR 71937 | O: 479-588-1034 | smalltownproperties.com

Information is believed to be accurate but not guaranteed.



LUKE ALSTON | EXECUTIVE BROKER
C: 479-234-1376 | lukealston@smalltownproperties.com

DEEDEE ALSTON | PRINCIPAL BROKER
C: 479-243-6525 | deedee@smalltownproperties.com

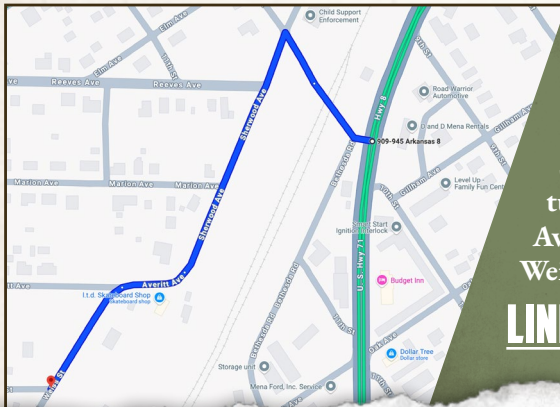
5607 Hwy 71 South - Cove, AR 71937 | O: 479-588-1034 | smalltownproperties.com

Information is believed to be accurate but not guaranteed.

VACANT LOT **CORNER OF WEISS & BERT** **POLK COUNTY, ARKANSAS**



land id. LINK



Directions From Highway 71 North
in Mena, AR: Turn left (west) onto
10th Street. Take a sharp left onto
Sherwood Avenue and continue as it
turns slightly to the right and becomes
Averitt Street. Make a slight left onto
Weiss Street.

LINK TO GOOGLE MAP DIRECTIONS



LUKE ALSTON | EXECUTIVE BROKER
C: 479-234-1376 | lukealston@smalltownproperties.com



DEEDEE ALSTON | PRINCIPAL BROKER
C: 479-243-6525 | deedee@smalltownproperties.com

5607 Hwy 71 South - Cove, AR 71937 | O: 479-588-1034 | smalltownproperties.com

Information is believed to be accurate but not guaranteed.