



SMALLTOWN
HUNTING PROPERTIES
& REAL ESTATESM

37.2± ACRES WITH A CABIN
HOLMES COUNTY, MS

\$330,000



OFFICE (769) 888-2522 | WWW.SMALLTOWNPROPERTIES.COM

THE HOLMES 37.2

PROPERTY PROFILE

LOCATION:

- 24927 Highway 12
Lexington, MS 39095
- Holmes County
- 4± Miles E of Lexington
- 55± Miles N of Madison

COORDINATES:

- 33.10251, -89.99436

PROPERTY USE:

- Residential
- Mini-Farm
- Weekend Getaway
- Hunting and Fishing

PROPERTY INFORMATION:

- 37.2± Total Acres
- 14± Acres of Fenced Pasture
- 2,340± SqFt Cypress Cabin
- 4 Bedrooms/3 Bathrooms
- Large Wraparound Porch
- 1.75± Acre Pond
- Rolling Terrain
- Hardwood Timber
- Multiple Out Buildings for Storage
- Paved Road Frontage

TAX INFORMATION:

2024 - \$2,788.76

- Parcel: 022-33-00800



SMALLTOWN
HUNTING PROPERTIES
& REAL ESTATESM

ADAM HESTER, ALC

ASSOCIATE BROKER

C: 601-506-5058

O: 769-888-2522

adam@smalltownproperties.com

4848 Main St. - Flora, MS 39071

smalltownproperties.com

/10,000+ Followers

Information is believed to be accurate but not guaranteed.

WELCOME TO THE HOLMES 37.2

WELCOME TO THE HOLMES 37.2, LOCATED A FEW MILES EAST OF THE TOWN OF LEXINGTON, MS! This 37.2± acre tract offers a solid foundation for a country lifestyle, whether you are seeking a permanent residence, a weekend getaway, or even the blueprint for your own mini-farm.

Situated in the center of the property is a 2,340± square foot, two-story cypress cabin. This home features four bedrooms, three bathrooms, a living room, a functional kitchen, and a dedicated utility room. The rustic interior offers a genuine cabin feel and caters to a variety of living arrangements. Additionally, there is a large wraparound porch providing panoramic views of the property!



SMALLTOWN
HUNTING PROPERTIES
& REAL ESTATESM

ADAM HESTER, ALC

ASSOCIATE BROKER

C: 601-506-5058

O: 769-888-2522

adam@smalltownproperties.com

4848 Main St. - Flora, MS 39071

smalltownproperties.com

f/10,000+ Followers

Information is believed to be accurate but not guaranteed.

MORE ABOUT THE HOLMES 37.2

The surrounding land further enhances the appeal. Approximately 14 acres are dedicated to fenced pasture, ideal for livestock, while the remaining acreage features a mix of rolling hardwood terrain, an open field, and a previously stocked 1.75± acre pond. This diverse landscape caters to multiple outdoor activities, including raising livestock, hunting, fishing, or simply enjoying the peaceful country atmosphere. An old barn and screened-in shed provide additional space to store your gear.

Homes with diverse acreage and mixed-use opportunities can be challenging to find. Be sure to see what the Holmes 37.2 has to offer today.

Call Adam Hester for a private tour.



SMALLTOWN
HUNTING PROPERTIES
& REAL ESTATESM

ADAM HESTER, ALC

ASSOCIATE BROKER

C: 601-506-5058

O: 769-888-2522

adam@smalltownproperties.com

4848 Main St. - Flora, MS 39071

smalltownproperties.com

10,000+ Followers

Information is believed to be accurate but not guaranteed.

37.2 ± ACRES WITH A CABIN

HOLMES COUNTY, MISSISSIPPI



SMALLTOWN
HUNTING PROPERTIES
& REAL ESTATESM

ADAM HESTER, ALC

ASSOCIATE BROKER

C: 601-506-5058

O: 769-888-2522

adam@smalltownproperties.com

4848 Main St. - Flora, MS 39071

smalltownproperties.com

10,000+ Followers

Information is believed to be accurate but not guaranteed.

37.2 ± ACRES WITH A CABIN

HOLMES COUNTY, MISSISSIPPI



SMALLTOWN
HUNTING PROPERTIES
& REAL ESTATESM

ADAM HESTER, ALC

ASSOCIATE BROKER

C: 601-506-5058

O: 769-888-2522

adam@smalltownproperties.com

4848 Main St. - Flora, MS 39071

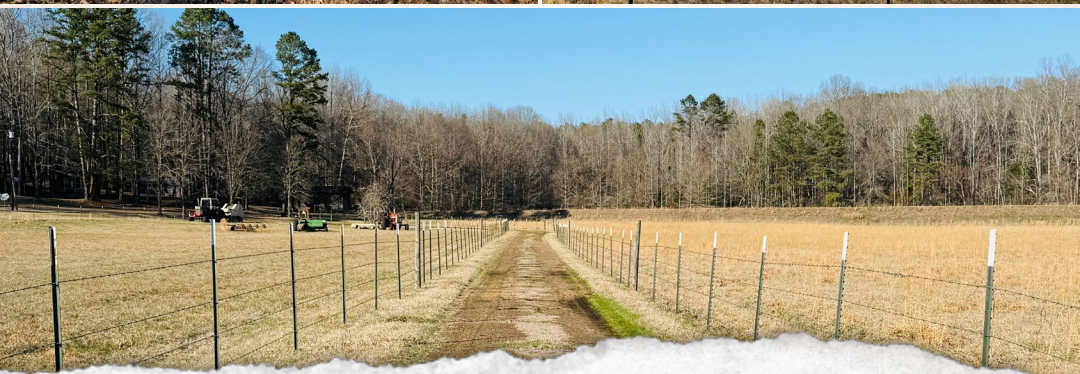
smalltownproperties.com

10,000+ Followers

Information is believed to be accurate but not guaranteed.

37.2 ± ACRES WITH A CABIN

HOLMES COUNTY, MISSISSIPPI



SMALLTOWN
HUNTING PROPERTIES
& REAL ESTATESM

ADAM HESTER, ALC

ASSOCIATE BROKER


C: 601-506-5058

O: 769-888-2522

adam@smalltownproperties.com

4848 Main St. - Flora, MS 39071

smalltownproperties.com

 10,000+ Followers

Information is believed to be accurate but not guaranteed.

37.2 ± ACRES WITH A CABIN

HOLMES COUNTY, MISSISSIPPI



SMALLTOWN
HUNTING PROPERTIES
& REAL ESTATESM

ADAM HESTER, ALC

ASSOCIATE BROKER


C: 601-506-5058

O: 769-888-2522

adam@smalltownproperties.com

4848 Main St. - Flora, MS 39071

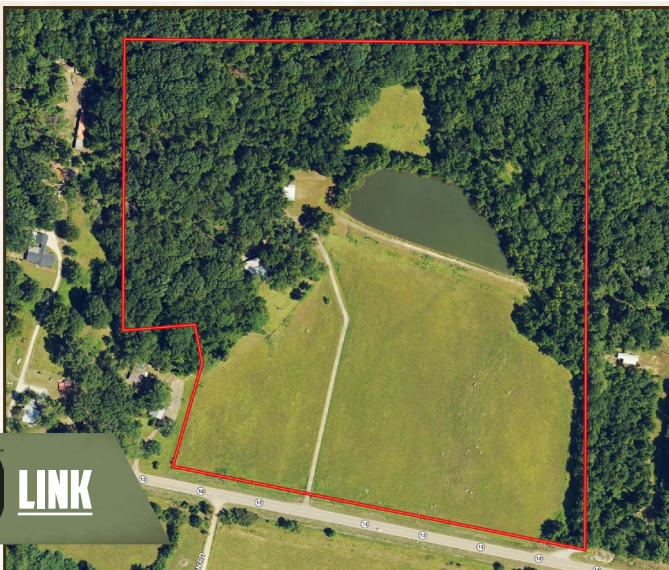
smalltownproperties.com

/10,000+ Followers

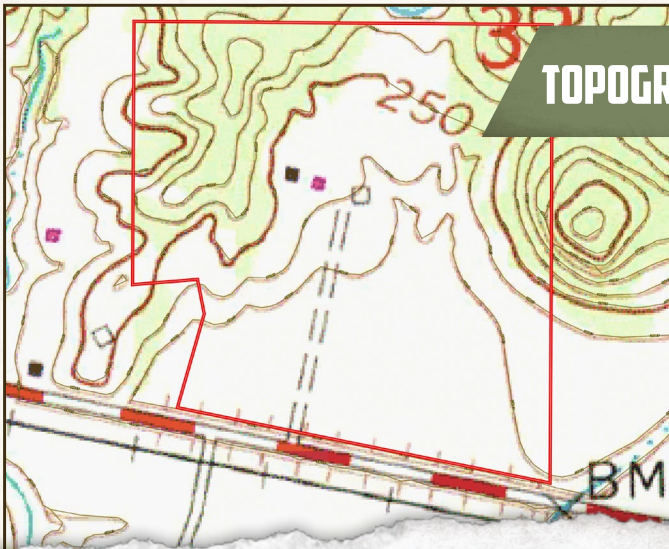
Information is believed to be accurate but not guaranteed.

37.2 ± ACRES WITH A CABIN

HOLMES COUNTY, MISSISSIPPI



land **id.** LINK



TOPOGRAPHY MAP



SMALLTOWN
HUNTING PROPERTIES
& REAL ESTATESM

ADAM HESTER, ALC

ASSOCIATE BROKER

C: 601-506-5058

O: 769-888-2522

adam@smalltownproperties.com

4848 Main St. - Flora, MS 39071

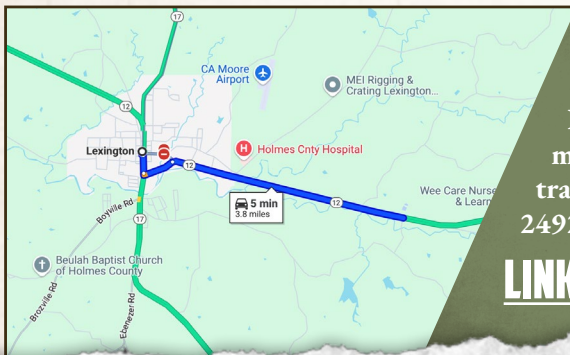
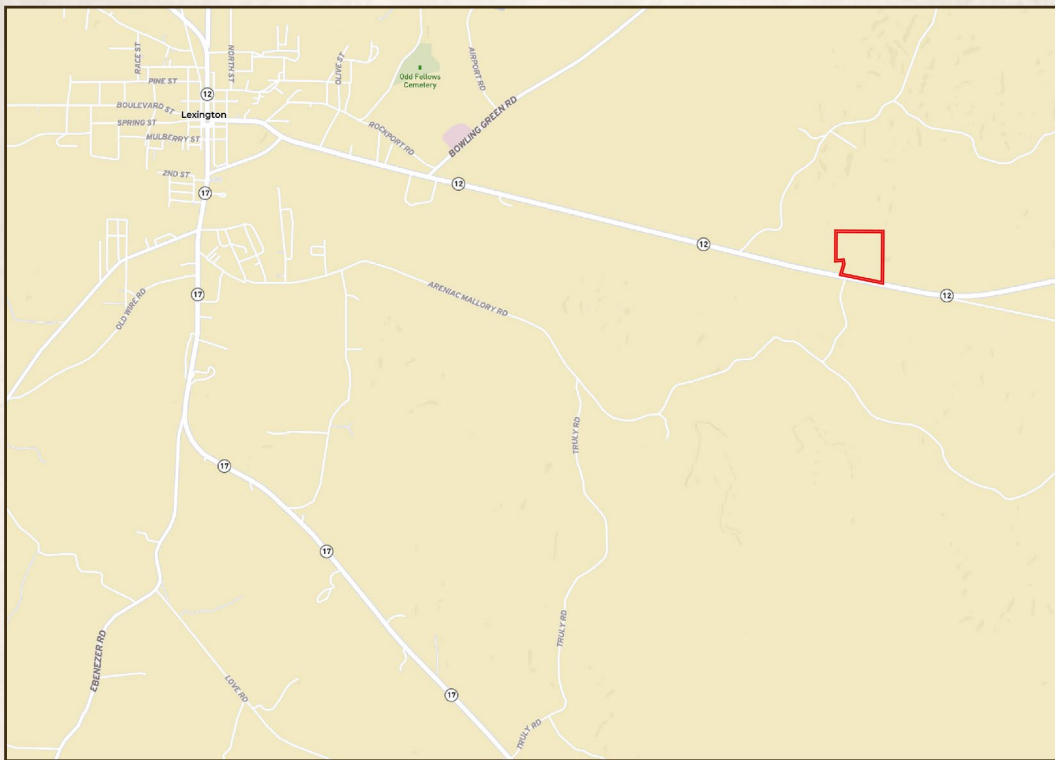
smalltownproperties.com

f/10,000+ Followers

Information is believed to be accurate but not guaranteed.

37.2 ± ACRES WITH A CABIN

HOLMES COUNTY, MISSISSIPPI



Directions From Yazoo Street in Lexington, MS: Turn left onto Lexington Bypass and proceed 0.4 miles. Turn right onto MS-12 E and travel 3 miles to the property on the left. 24927 Highway 12 Lexington, MS 39095

[LINK TO GOOGLE MAP DIRECTIONS](#)



SMALLTOWN
HUNTING PROPERTIES
& REAL ESTATESM

ADAM HESTER, ALC

ASSOCIATE BROKER

C: 601-506-5058

O: 769-888-2522

adam@smalltownproperties.com

4848 Main St. - Flora, MS 39071

smalltownproperties.com

Information is believed to be accurate but not guaranteed.

10,000+ Followers

