



37± ACRES WITH A HOME HARDEMAN COUNTY, TN

\$749,500



SMALLTOWN

HUNTING PROPERTIES
& REAL ESTATESM

OFFICE (662) 238-4077

THE HARDEMAN 37

PROPERTY PROFILE

LOCATION:

- 3360 Ebenezer Road
Toone, TN 38381
- Hardeman County
- 6.6± Miles NE of Bolivar
- 23.9± Miles S of Jackson

COORDINATES:

- 35.297683, -88.914754

PROPERTY USE:

- Residential
- Recreational
- Hunting
- Timberland
- Storage
- Investment

PROPERTY INFORMATION:

- 37± Acres
- 3,872± SqFt Home
- 5 Bedrooms/4 Baths
- Finished Basement
- Attached 2-Car Garage
- Expansive Back Patio
- Barn With Lean-To
- Workshop With Lean-To
- 3 Pole Barns
- Established Food Plot
- Shooting House

TAX INFORMATION:

- Parcel# 059-010.00
- TBD



SMALLTOWN
HUNTING PROPERTIES
& REAL ESTATESM

ANNAH BARNES

LAND & RESIDENTIAL SPECIALIST

C: 662-316-3971

O: 662-238-4077

annah@smalltownproperties.com

50 CR 401 - Oxford, MS 38655

smalltownproperties.com

Information is believed to be accurate but not guaranteed.

WELCOME TO THE HARDEMAN 37

WELCOME TO YOUR SERENE 37± ACRE RETREAT AT 3360 EBENEZER ROAD IN TOONE, TN, WHERE PEACEFUL COUNTRY LIVING MEETS SPACE, COMFORT, AND VERSATILITY. Built in 1994, this sizeable Hardeman County home offers 3,872± square feet of living space with five bedrooms and four full bathrooms, making it ideal for families, multi-generational living, or anyone seeking room to spread out and enjoy rural life.

Inside, the main level features three generous bedrooms, three full bathrooms, a formal living and dining area, and a large den that provides the perfect space for entertaining or relaxing with loved ones. The finished basement adds even more functionality with two additional bedrooms, a full bathroom, and a large open living area complete with a cozy fireplace and kitchen combo, suitable for guests or extended family.



SMALLTOWN
HUNTING PROPERTIES
& REAL ESTATESM

ANNAH BARNES

LAND & RESIDENTIAL SPECIALIST

C: 662-316-3971

O: 662-238-4077

annah@smalltownproperties.com

50 CR 401 - Oxford, MS 38655

smalltownproperties.com

Information is believed to be accurate but not guaranteed.

MORE ABOUT THE HARDEMAN 37

The property continues to impress outside with an attached two-car garage, a spacious patio area, and multiple outbuildings that add to its charm and practicality. These include a 60'x72' barn with a lean-to, a 36'x42' workshop with a 16' lean-to, and three large pole barns for storage or hay barns.

For outdoor enthusiasts, the land features a well-established food plot and a shooting house tucked away at the back of the property—ideal for hunting or simply observing the abundant local wildlife.

Whether you are dreaming of hobby farming, raising livestock, or just escaping to a quiet slice of countryside, this property offers the perfect backdrop for your rural lifestyle.

**Call Annah Barnes today to tour this
unique, beautiful, versatile property.**



SMALLTOWN
HUNTING PROPERTIES
& REAL ESTATESM

ANNAH BARNES
LAND & RESIDENTIAL SPECIALIST

C: 662-316-3971

O: 662-238-4077

annah@smalltownproperties.com

50 CR 401 - Oxford, MS 38655

smalltownproperties.com

Information is believed to be accurate but not guaranteed.

37± ACRES WITH A HOME

HARDEMAN COUNTY, TENNESSEE



SMALLTOWN
HUNTING PROPERTIES
& REAL ESTATESM

ANNAH BARNES

LAND & RESIDENTIAL SPECIALIST

C: 662-316-3971

O: 662-238-4077

annah@smalltownproperties.com

50 CR 401 - Oxford, MS 38655

smalltownproperties.com

Information is believed to be accurate but not guaranteed.

37± ACRES WITH A HOME

HARDEMAN COUNTY, TENNESSEE



SMALLTOWN
HUNTING PROPERTIES
& REAL ESTATESM

ANNAH BARNES

LAND & RESIDENTIAL SPECIALIST

C: 662-316-3971

O: 662-238-4077

annah@smalltownproperties.com

50 CR 401 - Oxford, MS 38655

smalltownproperties.com

Information is believed to be accurate but not guaranteed.

37± ACRES WITH A HOME

HARDEMAN COUNTY, TENNESSEE



SMALLTOWN
HUNTING PROPERTIES
& REAL ESTATESM

ANNAH BARNES

LAND & RESIDENTIAL SPECIALIST

C: 662-316-3971

O: 662-238-4077

annah@smalltownproperties.com

50 CR 401 - Oxford, MS 38655

smalltownproperties.com

Information is believed to be accurate but not guaranteed.

37± ACRES WITH A HOME HARDEMAN COUNTY, TENNESSEE



SMALLTOWN
HUNTING PROPERTIES
& REAL ESTATESM

ANNAH BARNES
LAND & RESIDENTIAL SPECIALIST
C: 662-316-3971
O: 662-238-4077

annah@smalltownproperties.com
50 CR 401 - Oxford, MS 38655

smalltownproperties.com

Information is believed to be accurate but not guaranteed.

37± ACRES WITH A HOME

HARDEMAN COUNTY, TENNESSEE

BASEMENT



SMALLTOWN
HUNTING PROPERTIES
& REAL ESTATESM

ANNAH BARNES

LAND & RESIDENTIAL SPECIALIST

C: 662-316-3971

O: 662-238-4077

annah@smalltownproperties.com

50 CR 401 - Oxford, MS 38655

smalltownproperties.com

Information is believed to be accurate but not guaranteed.

37± ACRES WITH A HOME

HARDEMAN COUNTY, TENNESSEE



SMALLTOWN
HUNTING PROPERTIES
& REAL ESTATESM

ANNAH BARNES

LAND & RESIDENTIAL SPECIALIST

C: 662-316-3971

O: 662-238-4077

annah@smalltownproperties.com

50 CR 401 - Oxford, MS 38655

smalltownproperties.com

Information is believed to be accurate but not guaranteed.

37± ACRES WITH A HOME

HARDEMAN COUNTY, TENNESSEE



SMALLTOWN
HUNTING PROPERTIES
& REAL ESTATESM

ANNAH BARNES

LAND & RESIDENTIAL SPECIALIST

C: 662-316-3971

O: 662-238-4077

annah@smalltownproperties.com

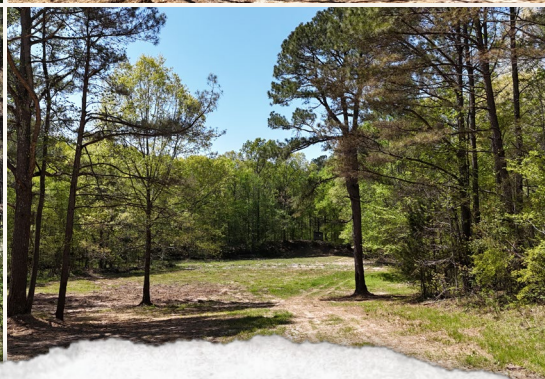
50 CR 401 - Oxford, MS 38655

smalltownproperties.com

Information is believed to be accurate but not guaranteed.

37± ACRES WITH A HOME

HARDEMAN COUNTY, TENNESSEE



SMALLTOWN
HUNTING PROPERTIES
& REAL ESTATESM

ANNAH BARNES

LAND & RESIDENTIAL SPECIALIST

C: 662-316-3971

O: 662-238-4077

annah@smalltownproperties.com

50 CR 401 - Oxford, MS 38655

smalltownproperties.com

Information is believed to be accurate but not guaranteed.

37± ACRES WITH A HOME

HARDEMAN COUNTY, TENNESSEE

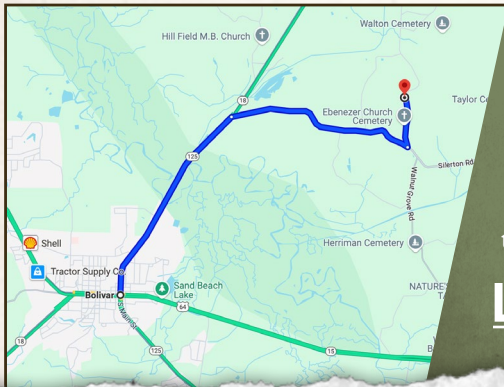


land id. LINK

Directions From Bolivar, TN: Travel 2.8 miles on TN-125 S. Turn left onto Ebenezer Road and in 0.7 miles the driveway will be on your left.

Directions From Jackson, TN: Travel US-45 S to TN-18 S. Turn right on TN-18 S and continue 16.5 miles. Turn left onto Brown Rd/Ebenezer Road and proceed 4.1 miles. Turn left onto TN-125 N and travel 0.2. Turn right onto Walnut Grove Road and continue 2 miles. Turn right on River Road and proceed 3.3 miles to the driveway on your right.

LINK TO GOOGLE MAP DIRECTIONS



SMALLTOWN
HUNTING PROPERTIES
& REAL ESTATESM

ANNAH BARNES

LAND & RESIDENTIAL SPECIALIST

C: 662-316-3971

O: 662-238-4077

annah@smalltownproperties.com

50 CR 401 - Oxford, MS 38655

smalltownproperties.com

Information is believed to be accurate but not guaranteed.