

**5.4± ACRES**  
**LAFAYETTE COUNTY, MS**  
**\$42,000**



**SMALLTOWN**

HUNTING PROPERTIES  
& REAL ESTATE<sup>SM</sup>

OFFICE (662) 238-4077



# THE LAFAYETTE 5.4

## PROPERTY PROFILE

### LOCATION:

- CR 270, Oxford, MS 38655
- Lafayette County
- 8.2± Miles E of Oxford
- 25.4± Miles W of Pontotoc

### COORDINATES:

- 34.3423, -89.4122

### PROPERTY USE:

- Potential Homesite
- Recreation
- Investment

### PROPERTY INFORMATION:

- 5.4± Acres
- Wooded Homesite
- Utilities Available
- Lafayette County School District
- County Road Frontage

### TAX INFORMATION:

2024

- County: \$125.56
- Parcel: 128-33-012.00



**SMALLTOWN**  
HUNTING PROPERTIES  
& REAL ESTATE<sup>SM</sup>

**LUKE GOSSETT**

LAND SPECIALIST

C: 662-832-8822

O: 662-238-4077

[lgossett@smalltownproperties.com](mailto:lgossett@smalltownproperties.com)

50 CR 401 - Oxford, MS 38655

[smalltownproperties.com](http://smalltownproperties.com)

Information is believed to be accurate but not guaranteed.



# WELCOME TO THE LAFAYETTE 5.4

**WELCOME TO YOUR FUTURE HOMESITE IN LAFAYETTE COUNTY, MS!** This 5.4± acre tract is located just off County Road 270 and is the perfect size for your dream home, offering multiple ridges with a range of different home sites. The parcel will require some dirt work, but you will be ready to build soon thereafter! For your convenience, utilities are available. Many hardwoods provide a perfect backdrop for your future home.

**Small tracts at an affordable price are a rare find, so act quickly!**  
**Contact Luke Gossett today for a personal tour of Lafayette 5.4.**



**SMALLTOWN**  
HUNTING PROPERTIES  
& REAL ESTATE<sup>SM</sup>

**LUKE GOSSETT**

LAND SPECIALIST

C: 662-832-8822

O: 662-238-4077

[lgossett@smalltownproperties.com](mailto:lgossett@smalltownproperties.com)

50 CR 401 - Oxford, MS 38655

[smalltownproperties.com](http://smalltownproperties.com)

Information is believed to be accurate but not guaranteed.



5.4 ± ACRES

LAFAYETTE COUNTY, MISSISSIPPI



**SMALLTOWN**  
HUNTING PROPERTIES  
& REAL ESTATE<sup>SM</sup>

**LUKE GOSSETT**

LAND SPECIALIST

C: 662-832-8822

O: 662-238-4077

[lgossett@smalltownproperties.com](mailto:lgossett@smalltownproperties.com)

50 CR 401 - Oxford, MS 38655

[smalltownproperties.com](http://smalltownproperties.com)

Information is believed to be accurate but not guaranteed.



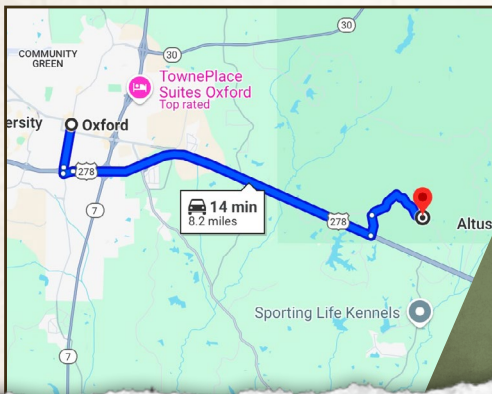
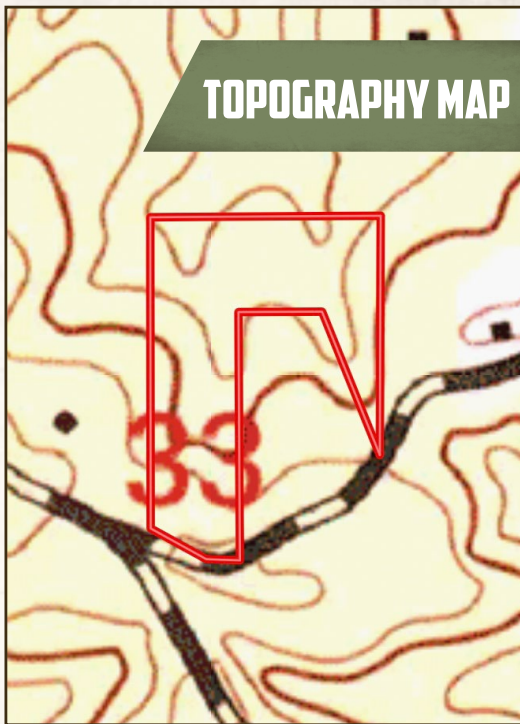
5.4 ± ACRES

LAFAYETTE COUNTY, MISSISSIPPI

land id. LINK



TOPOGRAPHY MAP



Directions From the Hwy 6 and Hwy 7 Intersection: Travel 5 miles east on Hwy 6. Turn left on CR 269 and travel 0.4 miles. Turn right on Bethel Church Road. Continue onto CR 270 and the property will be on your left.

[LINK TO GOOGLE MAP DIRECTIONS](#)



**SMALLTOWN**  
HUNTING PROPERTIES  
& REAL ESTATE<sup>SM</sup>

**LUKE GOSSETT**

LAND SPECIALIST

C: 662-832-8822

O: 662-238-4077

[lgossett@smalltownproperties.com](mailto:lgossett@smalltownproperties.com)

50 CR 401 - Oxford, MS 38655

[smalltownproperties.com](http://smalltownproperties.com)

Information is believed to be accurate but not guaranteed.